

Cut bags and pour water into a container, then gently place frags inside. Add water from your tank until corals are submerged.



Gently blow off corals with a baster to remove accumulated detritus or other undesirables. (Gently is very important.)

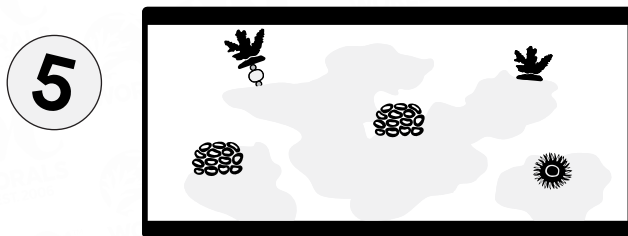


Place corals near the bottom of your reef, preferably on a frag rack, so they can adjust to your aquarium's lighting.



3. Superglue Gel  
2. Epoxy  
1. Superglue Gel

Use a tiny amount of superglue with a small ball of aquarium safe epoxy in between to glue your frags.



Place frag with glue on it into water and push down in optimal location for each species.

## LIGHTING/PLACEMENT CHART

Acropora	Zoanthids	Stylophora	Leathers	Birdsnest	Ricordeas	Montipora	Pavona	Cyphastrea	Euphyllia	Echinata	Psammocora	Favia	Favites	Leptoseris	Blastomussa	Micromussa	Chalices	Goniopora	Mushrooms
HIGHER LIGHT										LOWER LIGHT									

## FLOW CHART

<b>SPS</b> ACROS, BIRDSNEST, STYLOS, SOME MONTIS			<b>HIGH DIRECT FLOW</b>
<b>LPS</b> CHALICES, BLASTOS, FAVIIDS, EUPHYLLIA, MICROMUSSAS			<b>LOW-MED RANDOM FLOW</b>
<b>SOFT</b> ZOANTHIDS, LEATHERS, CLOVES, MUSHROOMS			<b>LOW-MED PULSE FLOW</b>

