

Abbreviations

4AQR	4-Aminoquinoline retinopathy	SARS	Severe acute respiratory syndrome
4AQs	4-Aminoquinolines (chloroquine and hydroxychloroquine)	SLE	Systemic lupus erythematosus
ABW	Actual body weight	TLR	Toll-like receptor
APC	Antigen presenting cell	TNF	Tumor necrosis factor
BCVA	Best corrected visual acuity	TNF- α	Tumor necrosis factor α
C	Chloroquine	V	Volume of distribution
C _p G ODN	C _p G oligodeoxynucleotide		
CV	Color vision		
CYP	Cytochrome P450 enzymes		
DFE	Dilated fundus examination		
DNA	Deoxyribonucleic acid		
ERK	Extracellular signal-regulated kinases		
FP	Ferriprotoporphyrin IX		
GVF	Goldmann visual fields		
HC	Hydroxychloroquine		
HIV	Human immunodeficiency virus		
HMG-CoA	3-Hydroxy-3-methylglutaryl-coenzyme A reductase		
IBW	Ideal body weight		
IFN	Interferon		
IL	Interleukin		
LD ₅₀	Lethal dose 50		
LDL	Low-density lipoprotein		
M	Mole		
mRNA	Mitochondrial ribonucleic acid		
NG	Not given		
RA	Rheumatoid arthritis		
RNA	Ribonucleic acid		
RPE	Retinal pigment epithelium		

This chapter covers the pharmacology of chloroquine and hydroxychloroquine, which is similar for both drugs [1], but the details are different. For example, both drugs are partially excreted in feces, but the proportions differ slightly—8–10 % for chloroquine and 15–24 % for hydroxychloroquine. Generally, whatever is said in this chapter about one drug can be assumed to apply to the other unless otherwise specified [1, 2]. Because both drugs are derivatives of a 4-aminoquinoline (4AQ) nucleus, they are referred to as 4AQs, and the retinopathy that they can cause is termed 4-aminoquinoline retinopathy (4AQR) [3]. Commonly used abbreviations in this chapter are collected in “Abbreviations” for reference. Each term will be first used in its full form, along with its abbreviation.

2.1 History

In the 1600s, the Jesuits who proselytized Chile discovered from the Incas that the bark of the cinchona tree can cure malaria [4, 5]. Additional medicinal qualities of cinchona bark were described in the 1700s, and the British and Dutch transplanted these trees to Javan plantations in the early 1900s

for the production of quinine. In 1894, Payne described the use of quinine to treat systemic lupus erythematosus (SLE) [6]. Other alkaloids contained in cinchona bark, such as pamaquine, were also successfully used to treat SLE [5].

When the Japanese army occupied Java in World War II, the natural supply of quinine was lost, and synthesis of antimalarials was pursued in the United States [7]. Quinacrine, a 9-aminoacridine compound, was first used, but had the unpleasant side effect of staining the skin and sclera yellow in a manner indistinguishable from icterus [8–10]. The 4AQs, chloroquine and hydroxychloroquine, were found to be effective as antimalarials and did not discolor the skin. Chloroquine was first synthesized in 1934 by Andersag of I.G. Farbenindustrie in a German effort to find drugs better than quinine [11]. The Germans lost interest in the drug when they judged it to be too toxic for use in man, but the Americans restudied the drug and found it to be effective against malaria and sufficiently safe [3, 7, 12]. Hydroxychloroquine was synthesized in 1946 and proposed as a safer alternative to chloroquine in 1955 [13]. Resistance to chloroquine as an antimalarial became a problem in some parts of the world in the 1980s.

In World War II it was observed that servicemen with rashes and inflammatory arthritis who took quinacrine and chloroquine for malaria prophylaxis experienced improvement in their autoimmune conditions [14]. In 1951, Page used quinacrine to treat arthritis and autoimmune dermatologic conditions [15]. Later chloroquine and then hydroxychloroquine were also noted to favorably affect patients with rheumatologic diseases. Over time, both have been widely adopted for these uses. They are commonly used in patients with rheumatoid arthritis (RA), SLE, discoid lupus erythematosus, polymorphous light

eruptions, solar urticaria, recurrent basal cell carcinoma of the skin, porphyrea cutane tarda, antiphospholipid antibody syndrome, and more than 20 other rarer conditions [11, 16–20].

The side effects other than retinopathy of the 4AQs are discussed in Chap. 3. Chapters 4 through 6 cover aspects of retinopathy. The 4AQs and quinacrine can cause retinopathy with the order of frequency chloroquine > hydroxychloroquine >> quinacrine. Chloroquine retinopathy was first described by Hobbs in 1959 [21]. Hydroxychloroquine retinopathy was first described by Braun-Vallon in 1963 [22, 23]. Quinacrine retinopathy is so rare that some have said that it does not exist [5, 24]. Nevertheless, it does, identical in its fundoscopic appearance to 4AQR, and was described in 2004 [25].

2.2 Chemistry

The parent molecule for the antimalarials is quinine. Both chloroquine ($C_{18}H_{26}ClN_3$) and hydroxychloroquine ($C_{18}H_{26}ClN_3O$) are alkylated 4-aminoquinolines (4AQs) (Fig. 2.1) [6]. Chloroquine is 7-chloro-4-(4-diethylamino-1-methylbutylamino) quinoline and hydroxychloroquine is its hydroxyl derivative. Chloroquine and hydroxychloroquine have molecular weights of 320 and 336, respectively [26, 27]. Both chloroquine and hydroxychloroquine are amphiphilic weak bases based on two fused aromatic rings having conjugated double bonds, the 4-aminoquinoline nucleus (Fig. 2.1). Both drugs cross cell membranes well [16, 28, 29]. Hydroxychloroquine is more polar, less lipophilic, and has more difficulty diffusing across cell membranes [6, 30, 31]. The 4AQs lack the third benzene ring that is part of the acridine nucleus of quinacrine (Fig. 2.1) [6].

Useful Conversion Factors

In the literature on chloroquine and hydroxychloroquine, some articles express concentrations in $\mu\text{g/mL}$ or ng/mL and others in M/L . The molecular weights of chloroquine and hydroxychloroquine are 320 and 336, respectively; so one mole of chloroquine weighs 320 g and one mole

of hydroxychloroquine weighs 336 g. It follows that 1×10^{-6} M of chloroquine and hydroxychloroquine is equivalent to 320 ng/mL (0.320 $\mu\text{g/mL}$) and 336 ng/mL (0.320 $\mu\text{g/mL}$), respectively. Conversely, one $\mu\text{g/ml}$ of chloroquine and hydroxychloroquine is equivalent to 3.125×10^{-6} and 2.97×10^{-6} M/L, respectively.

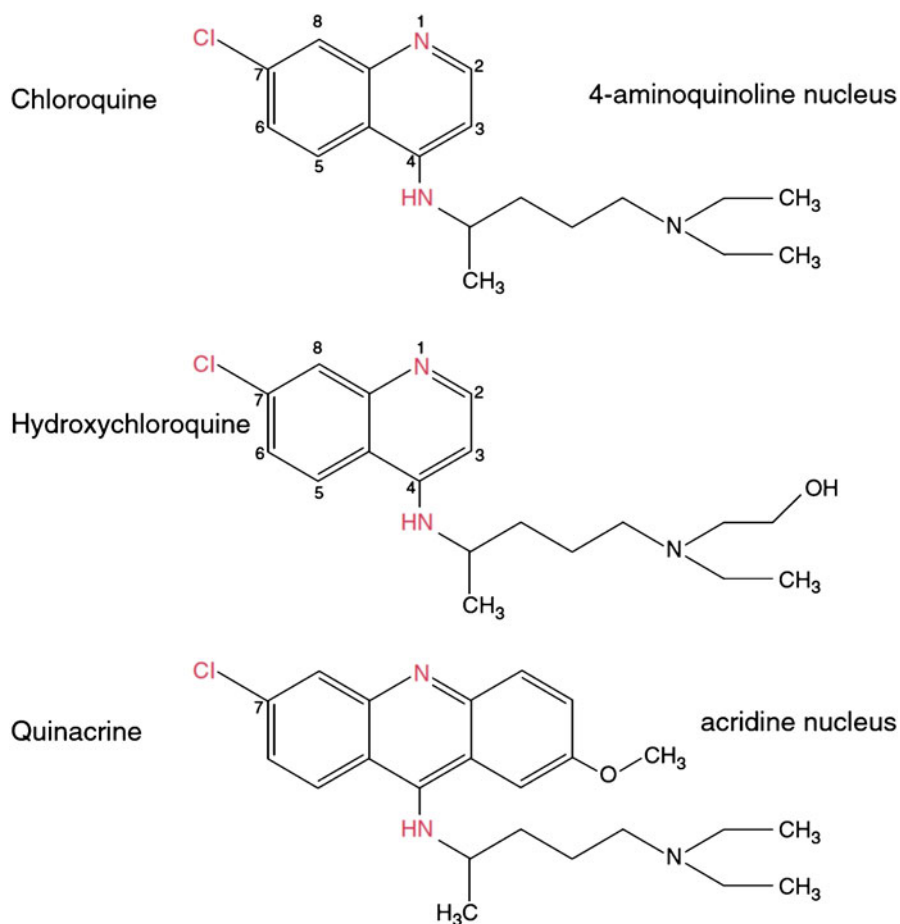


Fig. 2.1 Chloroquine and hydroxychloroquine are 4-aminoquinolines. Quinacrine has a side chain similar to that in chloroquine, but is based on an acridine nucleus

Hydroxychloroquine is more soluble than chloroquine, but both are water-soluble [32]. Chloroquine has two basic groups corresponding to the quinoline-ring nitrogen and the diethyl-amino side-chain nitrogen with ionization constants of 8.1 and 10.2, respectively [33–36]. At a physiologic pH of 7.4, 18 % of chloroquine is

monoprotonated but still soluble in lipid and able to traverse cell membranes. However, biprotonated chloroquine, as occurs in a lysosome at a pH of 4–5, is sequestered and prevented from traversing back out to the cytoplasm (see Chap. 1) [34, 37]. Although the amount of free drug present in the plasma is miniscule at the physiologic pH,

Table 2.1 Chemical and brand names of antimalarial drugs

Chemical name	Brand name
Chloroquine phosphate	Aralen, Bemaphate, Chinamine, Delagil, Gontochin, Imagon, Iroquine, Klorokin, Luprochin, Resoquine, Sanoquin, Tanakan, Tresochin, Tochin
Chloroquine diphosphate	Avlocor and Resochin
Chloroquine sulfate	Amokin, Arechin, Arthrochin, Artrichin, Bemaco, Bemaphate, Bemasulph, Nivaquine, Resoquine
Hydroxychloroquine sulfate	Axenal, Dolquine, Erocoquin, Plaquenil, Polirrhein, Quensyl
Quinacrine hydrochloride	Acriquine, Atabrine, Atebrin, Chinacrin, Erion, Itaichin, Mepacrine, Palacrin, Metoquine
Amodiaquine dihydrochloride	CAM-AQ1, Camoquinal, Camoquine, Flavoquine, Miaquin,
Quinine sulfate	Qualaquin

Source: Dubois [10]

it is this form of the drug that determines the distribution of the drug between the plasma and the tissues [36]. Induction of acidosis increases the concentration of the drug in the plasma and erythrocytes but does not change drug concentration in the tissues, which have large reservoirs at steady state.

The chemical and brand names of the antimalarial drugs are listed in Table 2.1. Chloroquine

diphosphate is the oral form of the drug, and chloroquine hydrochloride is the form used intramuscularly for malaria-induced coma [38]. Neither 4AQ is permitted for routine clinical use in Japan following multiple lawsuits over retinopathy in the 1970s [39]. Hydroxychloroquine is more commonly used in the United States [6]. Chloroquine is rarely used in the United States after multiple lawsuits in the 1960s led Winthrop Laboratories to withdraw the drug's rheumatic indications, but continues to be commonly used in Canada, Mexico, Brazil, Europe, Poland, Turkey, South Africa, and Asia [1, 2, 6, 39–47].

Structure-activity studies of many derivatives of the 4AQs show that halogen substitutions at any position other than seven (Fig. 2.1) reduce pharmacologic activity and toxicity [12]. An aryl rather than an alkyl side chain decreases the therapeutic ratio [12]. Increasing alkyl side-chain length above five carbons decreases the therapeutic ratio and increases toxicity [12].

Chloroquine binds to nucleic acids by electrostatic forces, hydrogen bonds, and van der Waals forces [48]. As a cation at physiologic pH, it binds ionically to melanin, which is a polyanion with many negatively charged carboxyl groups and ortho-semiquinone groups [35, 49–52]. Other binding forces to melanin include van der Waal's forces between the aromatic rings of chloroquine and the indole nuclei of melanin as well as charge transfer complexes in which melanin acts as an electron acceptor [35, 50–54]. The interactions of hydroxychloroquine and melanin parallel those of chloroquine.

Melanin and the 4-Aminoquinolines

Melanin is a name for a family of pigments which are polyanionic polymers formed from the oxidation of tyrosine in cellular vesicles called melanosomes [55]. The term is descriptive, not chemical. Eumelanin is brown or black. Pheomelanin is red or yellow and occurs in red hair [56]. Melanins occur in the retinal pigment epithelium (RPE) of the eye, in the inner ear, and in the substantia nigra of the brain. The highest concentrations are in the eye [55, 56]. The functions of melanin in the eye are to absorb light, preventing scatter, and to protect against free radicals [29, 56]. Although choroidal melanin seems to be synthesized throughout life, melanin in the RPE is synthesized for a brief interval of fetal and perinatal life with little production thereafter [56–58].

The interaction of melanin with 4AQs is complex. Some have written that increased melanin is related to toxicity [55]. Others have denied this or maintained an agnostic viewpoint pending further evidence [29, 54, 56]. Also, the possibility of a protective effect has been raised. The mechanism suggested is that melanin binds the drug and prevents formation of lamellar bodies until its binding capacity is exceeded [19, 51, 56, 59–62]. It has been hypothesized that the extensive binding of 4AQs to melanin produces high local gradients of the drugs that may have importance in identifying cell types that are particularly affected [63]. For example, calculations suggest that the effective concentration of chloroquine in the cytoplasm of the RPE may be in the range of 10^{-5} to 10^{-4} M/L [63]. Chloroquine accumulates in the uveal tract of pigmented animals, but not albino animals, but both types of animals develop 4AQR [64, 65].

Melanin content in the RPE decreases with age [58]. In the first two decades of life, an average of 8 % of cytoplasmic volume is occupied by melanin, but only 3.5 % after age 40 [66]. The decrease is thought to occur by the degradation of melanin, after damage by light or free radicals, into complex granules containing melanolysosomes and melanolypofuscin. The relationship of decreasing melanin and increasing risk of 4AQR with increasing age is intuitive but speculative.

The 4AQs have chiral carbons about which the side chains can be arranged so as to be non-superimposable mirror images of each other [67]. These stereoisomers, called enantiomers, are labeled as R(–) or S(+) forms. Clinically used 4AQs are racemic mixtures with equal amounts of R(–) and S(+) forms [67].

Both enantiomers of chloroquine are equipotent *in vitro* and in a duck model of malaria. In mice and rats S(+) chloroquine was more potent than R(–) chloroquine, possibly due to stereoselectivity in distribution of drug throughout the body [12, 37, 68, 69].

S(+) chloroquine is more highly bound to plasma proteins than R(–) chloroquine (67 % versus 35 %) [68]. Sequestration of the R(–) enantiomer in ocular tissues is greater than that of the S(+) enantiomer [67]. The toxicity of the S(+) enantiomer is greater than the R(–) enantiomer in mammals [69]. The S(+) enantiomer for both chloroquine and hydroxychloroquine is excreted by the kidneys preferentially compared to the R(–) enantiomer [55, 67, 68]. Because renal failure is associated with 4AQR, it is possible that S(+) chloroquine and S(+) hydroxychloroquine are more toxic in humans than R(–) chloroquine and R(–) hydroxychloroquine, respectively [55].

2.3 Pharmacokinetics and Tissue Distribution of the 4-Aminoquinolines

2.3.1 Absorption

Nearly complete absorption of 4AQs after an oral dose occurs within 2–4 h (Fig. 2.2) [2, 3, 12, 37, 70]. In fasting subjects the absorption of oral chloroquine was 89 ± 16 % and of hydroxychloroquine was 74 ± 13 % [70, 71]. Absorption is relatively unaffected by concomitant ingestion of food. However, intersubject variability of 30–100 % has been reported in extent of absorption, which may explain in part the individual variability of 4AQ effectiveness and toxicity [4, 71, 72].

2.3.2 Distribution and Pharmacokinetics

The pharmacokinetics of chloroquine and hydroxychloroquine are similar [38, 73–75]. However, the explanation is complicated because of their differential sequestration in various

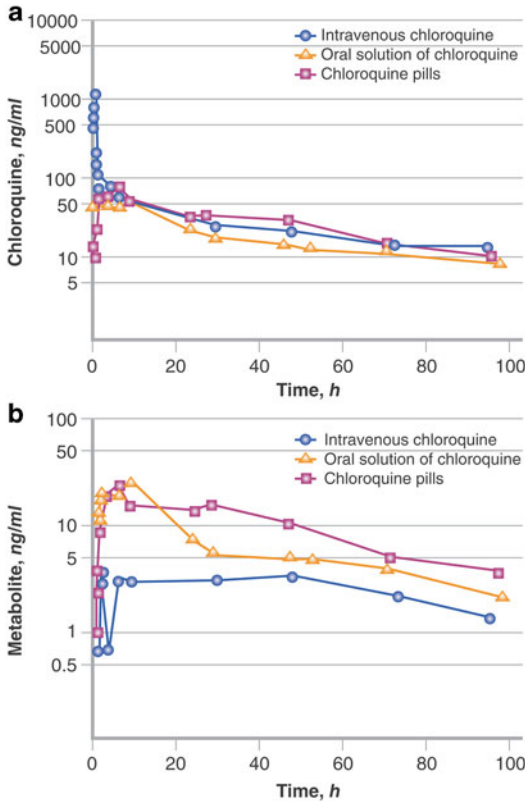


Fig. 2.2 Chloroquine bioavailability and elimination in man. A single dose of chloroquine was given intravenously (blue circles), as an oral solution (yellow triangles), or as tablets (purple squares). Panel A shows plasma concentration of chloroquine and panel B chloroquine metabolite. The near superposition of the three curves in panel A is evidence of near-complete absorption of chloroquine from the gastrointestinal tract. Slow elimination is also indicated. Data from Gustafsson [70]

tissues of the body and continuously evolving tests for detection of the drugs in plasma that are increasingly sensitive [37, 75, 76]. As a result, estimates of pharmacokinetic parameters have varied widely over the years [53, 75]. For example, the terminal half-life of chloroquine has been reported variously to be between one and 157 days [53, 70, 75, 76]. In addition, dose-dependent kinetics have been reported by some, while others have claimed that this interpretation arises from artifacts of insensitive detection methods [37, 75–77]. In the 1980s a two-compartment model was thought to best describe the pharmacokinetics of the 4AQs [2]. Now a model with

three compartments is considered to be more accurate [37, 75].

The 4AQs have a large volume of distribution (V) due to extensive sequestration of the drugs by tissues. Plasma volumes of distribution up to 65,000 L for chloroquine and 44,257 L for hydroxychloroquine have been reported [71, 75, 77]. Normalized by body mass, reported volumes of distribution for chloroquine have ranged from 204 to 800 L/kg depending on the sensitivity of the method of detecting chloroquine [37]. Drug disposition proceeds in three phases—distribution from blood to tissues, equilibration between blood and tissues, and release from tissues back into blood [19]. These phases have half-lives of 3–8, 40–216 h, and 30–60 days, respectively [13, 37, 70, 75, 78].

The peak plasma concentration after an oral dose of chloroquine is 3–12 h [10, 32, 67]. Thirty-three to 70 % of the drug in plasma is protein-bound [2, 32, 38, 75, 79, 80]. The effects of hypoalbuminemia and altered immunoglobulin composition in patients taking 4AQs are not well understood [80].

The phase of terminal elimination has the greatest importance for the 4AQs as used in autoimmune diseases in which they are given for years and for which steady-state levels are the emphasis. The most commonly quoted median value for the terminal elimination half-life is 40 days [16, 37, 38, 75, 81]. The pharmacokinetics of chloroquine do not differ to a clinically important extent between black and white patients [11, 69, 79]. The average melanin content of a black person is estimated to be 1 g and for a white person is estimated to be 250 mg. This implies that melanin sequestration is not a large factor in systemic pharmacokinetics although the drug continues to elute from melanin at low levels for years after cessation of ingestion [49, 64, 71, 78, 82].

A lower daily dose of chloroquine and hydroxychloroquine leads to a lower plateau concentration in plasma (Fig. 2.3 and Table 2.2). Doses of chloroquine of 3.5–4.0 mg/kg/day based on ideal body weight (IBW) yield serum concentrations of 6 to 9×10^{-7} M/L. Doses of hydroxychloroquine of 6.0–6.5 mg/kg/day based on IBW yield serum concentrations of 1.4 to

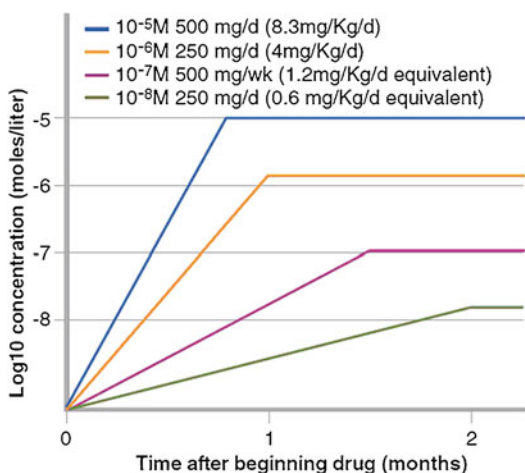


Fig. 2.3 Schematically depicted dependence of final equilibrium plasma concentration and equilibration time on daily dose of chloroquine. The dependence of the final equilibrium concentration on body mass is not shown. However, for a given daily dose the final equilibrium concentration will be lower for a higher body mass. Similar relationships apply to hydroxychloroquine dosing. Data from Mackenzie [2]

1.5×10^{-6} M/L [2]. Daily dosing of chloroquine 250 mg/day produces plasma concentrations at equilibrium of 0.31 to 3.13×10^{-6} M/L depending on body mass [2, 38]. The dependence of time to reach equilibrium levels on daily dosing is schematically represented in Fig. 2.3. Because the half-life to reach a steady-state concentration is not the same for all daily doses, one may conclude that the mechanism of drug elimination is not a

first-order process, but rather more complicated with some dependence of the elimination-rate constant on plasma-drug concentration (see Chap. 1) [83, p. 314, [84].

2.3.3 Steady-State Concentration of 4-Aminoquinolines in Various Organs

The concentration of 4AQs in the tissues of the body after ingestion varies. In pigmented rats, the order of concentration of chloroquine after a single dose from greatest to least is uvea > liver > lung > kidney > vitreous > heart > skin > hair > brain > blood > serum [53]. The results are similar in rabbits and humans [11, 82]. Drug binding to melanin explains the differences between pigmented and albino animals [11]. The order of concentration of hydroxychloroquine in various tissues of albino rats is similar, except that concentrations in the albinotic uvea fall to the approximate level of the heart. In pigmented mammals, the eye has the highest concentration due to binding by melanin [74]. Similar results were found after chronic oral administration of chloroquine to albino and pigmented rats (Figs. 2.4 and 2.5) [74].

Limited information from cases of accidental death in persons taking chloroquine and suicides by chloroquine ingestion indicates similar distributions of 4AQs across various tissues in humans [11]. Tissue uptake as a function of dosage is

Table 2.2 Plateau concentrations of 4-aminoquinolines according to daily dosing

Drug/reference	Dosing	Equivalent daily dosing for a subject with IBW of 60 kg (mg/kg/day)	Plateau plasma concentration (M/L)	Plateau blood concentration (M/L)
C [80]	250 mg/week	0.60	10^{-8}	$^a 5 \times 10^{-8}$
C [80]	500 mg/week	1.19	10^{-7}	$^a 5 \times 10^{-7}$
C [80]	250 mg/day	4.16	10^{-6}	$^a 5 \times 10^{-6}$
C [80]	500 mg/day	8.33	10^{-5}	$^a 5 \times 10^{-5}$
C [69]	310 mg/day	5.17	3.9×10^{-7}	1.95×10^{-6}
HC [175]	224 mg/day	3.73	$^b 2.5 \times 10^{-7}$	2.0×10^{-6}
HC [71]	155 mg/day	2.58	$^b 5.88 \times 10^{-7}$	2.94×10^{-6}
HC [71]	310 mg/day	5.17	$^b 1.18 \times 10^{-8}$	5.88×10^{-6}

In some rows only one plateau concentration was measured, with the other deduced (see *superscripts*). Findings that whole blood concentrations are approximately five times than that of plasma concentrations are denoted by *a*. The finding that plasma concentrations are approximately one-fifth of whole blood concentrations is denoted by *b*

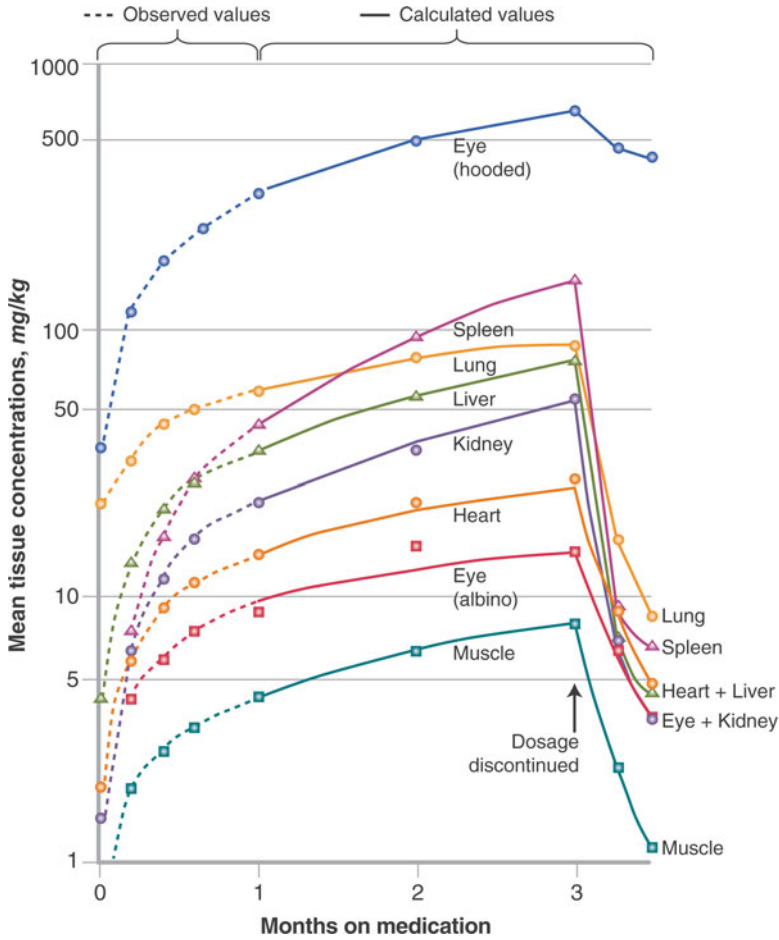


Fig. 2.4 Relative concentration of hydroxychloroquine in various tissues in rats. Tissue levels of hydroxychloroquine in albino rats receiving 40 mg/kg/day of hydroxychloroquine orally by stomach tube, 6 days a week, for 3 months. Groups of four or six animals were sacrificed on days 30, 61, 91, 99, and 106. Results shown project back

(mathematically, at intervals) to day 1, as indicated by broken lines. The single curve labeled “Eye (hooded)” refers to pigmented rather than albino rats. The melanin in pigmented tissues sequesters hydroxychloroquine. Data from McChesney EW [74]

nonlinear. In rats, a threefold increase in dosing leads to a 20-fold increase in hydroxychloroquine deposition in liver and spleen [85].

A useful way to understand the differential distribution of 4AQs across various tissues is to consider ratios of concentration in tissues compared to plasma concentration (Table 2.3). The concentration of chloroquine in the liver, spleen, and adrenal gland is 6,000–80,000 times that in plasma, depending on the species chosen for study—whether the species is pigmented or albinotic—and the regimen of drug administration [10, 32, 37]. Within a single organ there

are large differences in drug concentration in particular tissues. For example, chloroquine concentrations in the uvea of the rat are 9–32 times that of the retina, which in turn has concentrations six to nine times that of the vitreous [49, 54]. In another example, within skin the 4AQs are more concentrated in the epidermis than the corium with a concentration ratio of 5:1 to 15:1 [86]. The variation reflects sequestration of 4AQs by lysosomes and melanin [37]. Millimolar levels of 4AQs can be found in lysosomes, and melanin can bind a quantity of 4AQs up to 3 % of its weight [37, 87].

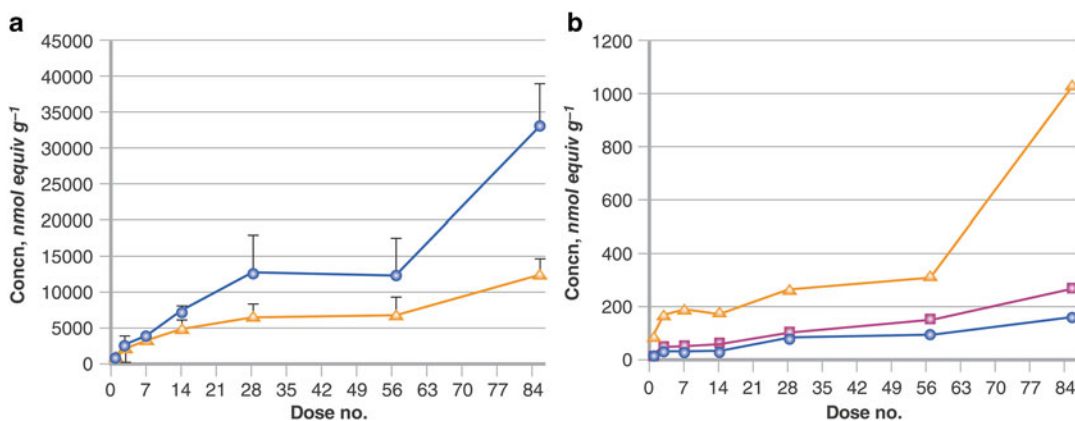


Fig. 2.5 Concentration of chloroquine in ocular tissues of pigmented rats. Panel A—Mean concentration of radioactivity in iris/ciliary body (blue line, circles) and choroid (orange line, triangles) at 24 h after repeated oral administration of ¹⁴C-chloroquine at daily doses of 28 mg (0.054 mmol)/kg/L under non-fasting conditions in pigmented rats for 84 days. Each value represents the mean \pm standard deviation for three rats. Compare the concentrations in iris/ciliary body and choroid to those found

in the retina and cornea in panel B. Panel B—Mean concentration of radioactivity in retina (orange line, triangles), cornea (purple line, squares), and vitreous (blue line, circles) after repeated oral administration of ¹⁴C-chloroquine at daily doses of 28 mg (0.054 mmol)/kg/L under non-fasting conditions in pigmented rats for 84 days. The concentration of chloroquine in the choroid is approximately 12 times higher in the choroid than the retina after the 84th dose. Data from Tanaka [54]

Table 2.3 Relative distribution of chloroquine among tissues

Model	Tissue	Tissue-plasma concentration ratio	Study
Human	Fat, tendon, bone	0.1	Titus [37], McChesney [74]
Albino rat, human	Erythrocytes	1.9–4.0	Berliner [3], Alvan [176], Titus [37, 70]
Albino rat	Whole blood	3.7	Berliner [3]
Albino rat	Brain	4–31	Berliner [3], Titus [37]
Albino rat	Muscle	4–41	Berliner [3], Titus [37]
Human	Skin	6–200	Ramser [87], Tannenbaum [32], Goldman [20]
Albino rat	Heart	150	Berliner [3]
NG	Leukocytes	100–300	Titus [37], Dubois [10]
Albino rat	Kidney	670	Berliner [3]
Albino rat	Lung	640	Berliner [3]
Albino rat	Liver	420	Berliner [3]

In the albino rat model chloroquine 25 mg/kg was given daily for 10 days yielding a mean plasma concentration of 157 g/L [3]. NG means not given

There are clinically unimportant differences in tissue distribution of chloroquine and hydroxychloroquine [78]. For an identical dose of hydroxychloroquine and chloroquine, tissue levels of chloroquine are 2.5 times those of hydroxychloroquine [74]. Tissue-plasma concentration ratios for chloroquine in various albinotic animals range from 28 to 93. For hydroxychloroquine the

analogous tissue-plasma concentration ratios range from 33 to 79. In contrast, for both drugs in pigmented animals the tissue-plasma concentration ratios are approximately 1,000–3,000 [11]. The 4AQs remain in human tissues for years. Five years after last ingesting chloroquine, chloroquine and its metabolite have been measured in the urine [85, 88].

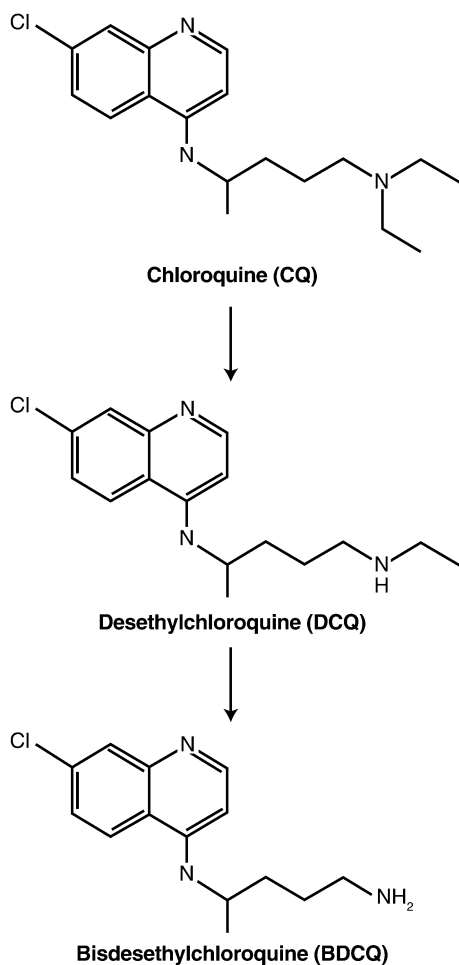
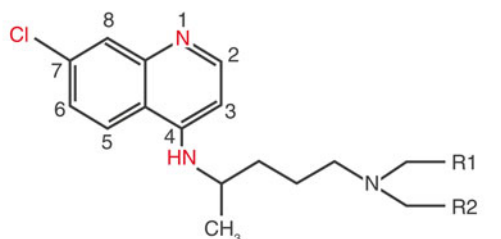


Fig. 2.6 Metabolism of chloroquine by dealkylation. Both metabolites are found in plasma and urine and both have activity similar to the parent compound. Data from Projean [89]

2.3.4 Metabolism

Metabolism of 4AQs is by dealkylation in the liver (Fig. 2.6) [68]. To determine metabolites of chloroquine, carbon-14-labeled chloroquine was administered to monkeys, after which 12 labeled metabolites were detected. The two most important were desethyl chloroquine and bisdesethyl chloroquine, both of which have pharmacologic activity and are thought to be approximately as toxic as the parent compounds [11]. The differential efficacy and toxicity of the metabolites of 4AQs has not been studied, but a suggestion has



Drug/Metabolite	R1	R2
Chloroquine	-CH ₂ CH ₃	-CH ₂ CH ₃
Hydroxychloroquine	-CH ₂ CH ₃	-CH ₂ CHOH
Desethylchloroquine	-CH ₂ CH ₃	-H
Desethylhydroxychloroquine	-H	-CH ₂ CHOH
Bisdesethylchloroquine	-H	-H

Fig. 2.7 Chemical structures of the three major metabolites of chloroquine and hydroxychloroquine. Chloroquine has two metabolites, whereas hydroxychloroquine has three

been made that desethylhydroxychloroquine might have a higher therapeutic ratio than the parent compound hydroxychloroquine [77].

The quinoline ring is resistant to degradation by cytochrome P450 enzymes (CYP) CYP2C8 and CYP3A4, which mediate 80 % of the total metabolism of 4AQs [38, 89–91]. The metabolism of chloroquine and hydroxychloroquine differs only in the number of metabolites produced (Fig. 2.7) [92]. Thirty percent to 79 % of an oral dose of a 4AQ is metabolized and 21–70 % is excreted without metabolism [24, 69, 91, 93].

Desethylchloroquine concentration after a dose of chloroquine reaches 40–48 % of chloroquine concentration. Bisdesethylchloroquine concentration reaches 10–13 % of chloroquine concentration [38, 68, 93, 94]. At steady state the ratio of chloroquine to desethylchloroquine was 7.2 ± 1.88 while the ratio of hydroxychloroquine to desethylhydroxychloroquine was $1.75 \pm .37$ [77].

Inhibition of cytochrome P450 isoenzymes by other drugs and variation across individuals in expression of the isoforms may explain the variation in levels of the two metabolites after ingestion of the same dose of chloroquine or hydroxychloroquine [77, 89]. For example, ketoconazole, an inhibitor of CYP3A4, inhibited the formation of desethylchloroquine by 33 %

Table 2.4 Excretion of 4-aminoquinolines

Fate	Chloroquine (%)	Hydroxychloroquine (%)	References
Excreted unchanged in urine	Range 10–60; median 38	Range 6–60; median 23	Tett [71], Schultz [78], Gustafsson [70], McChesney [11], Berliner [3], Titus [37], Ono [53], McChesney [74], Albert [73]
Excreted as metabolites in urine	Range 7–31; median 18	17	Gustafsson [70], McChesney [11], Titus [37], Ono [53]
Excreted in feces	8–10	24–25	McChesney [11], McChesney [74]
Sloughed off in skin	5	5	Mackenzie [80]
Stored long term in lean tissues	45	45	Mackenzie [80]

and 45 % at concentrations of 1×10^{-6} and 1×10^{-5} M/L, respectively [93]. Cimetidine, another CYP3A4 inhibitor, increased the half-life of an oral dose of chloroquine by 48 % [95]. The elimination half-lives of chloroquine, desethylchloroquine, and bisdesethylchloroquine are all from 20 to 60 days. The half-lives of elimination of the desethyl metabolites of the 4AQs are longer than those of the parent compounds. [77] Chloroquine and metabolites can be found in urine for months after a single oral dose [68].

Caution should be exercised in considering the results of testing in animal models. The results may not translate directly to human metabolism. For example, the dog metabolizes chloroquine by glucuronidation in a manner unlike some other species that leads to a relatively short half-life [11].

2.3.5 Excretion and Storage

4AQs are excreted by the kidney and the liver [96]. For both chloroquine and hydroxychloroquine, approximately 40–60 % is excreted as unchanged or metabolized drug through the kidneys, 8–25 % is excreted in unchanged or changed form in the feces, 5 % is sloughed off through the skin, and 25–45 % is stored long term in lean body tissues (Table 2.4) [3, 11, 37, 38, 53, 73, 74, 80]. Kidney or liver dysfunction decreases excretion of 4AQs and leads to greater drug retention and higher risk of retinopathy [80]. In the anuric patient, compared to subject with normal renal function, the equilibrium level of chloroquine is 70 % higher and for hydroxychloroquine is

25–30 % higher [71]. Declining renal function may be one mechanism by which age becomes a risk factor for retinopathy.

Alkalinization of urine decreases excretion [32]. Acidification of the urine by oral ingestion of ammonium chloride can increase renal excretion 20–80 % [85]. Intramuscular injection of dimercaprol can also increase urinary excretion of chloroquine [85]. Neither of these approaches has been adopted in clinical practice as practical methods to treat chloroquine retinopathy.

2.4 Clinical Uses and Dosing

The 4AQs are commonly used in rheumatologic conditions because they are effective in a high proportion of cases and have fewer side effects than gold, azathioprine, penicillamine, or levamisole [97–100]. The diagnoses for which 4AQs are most prescribed are rheumatoid arthritis (RA) and SLE, which together account for 82–95 % of the cases [23, 101, 102]. An epidemiologic survey, found that 60.1 % of patients with RA and 92.2 % of patients with SLE take hydroxychloroquine at some point in the course of their disease [61].

Antimalarials have a different mechanism of action than other immunomodulating therapies making them useful in combination therapy [42, 103–105]. In RA and SLE it is commonly observed that 60–95 % of patients taking chloroquine have a clinical response measured by subjective improvement, objective responses in laboratory measurements, activities of daily living, and reductions in flares of disease [8, 10, 37, 71, 106–112]. Although initially embraced for

patients with milder forms of SLE and RA [10], the recent trend is that 4AQs are being used in a higher proportion of patients with SLE; some have advocated their use in all SLE patients [24, 104]. Many reports pool all patients taking 4AQs together under the assumption that the disease for which the drug is taken is immaterial to the risk of retinopathy [62, 113, 114].

Clinical efficacy may be greater in SLE than in RA [115]. In 15 % of patients the clinical response is dramatic [37]. The erythrocyte sedimentation rate, C-reactive protein, and serum IgG levels typically decrease in patients with autoimmune diseases treated with 4AQs. Occasionally, long-term remission of autoimmune disease is possible with no progression of radiologically documented joint disease [116]. In SLE, use of 4AQs has also improved survival [117]. This may be due to the antiatherogenic and antithrombotic effects of 4AQs as well as their beneficial effects on lipid profile and osteoporosis [103, 104]. When the drugs are stopped, beneficial effects last for several weeks to months, but disease activity generally recurs [116]. There is typically no increase in rates of opportunistic infection. Chloroquine prevents an immunologic response to antigenic proteins requiring digestion, but not the response of T cells to predigested antigenic peptides [118].

Full effects of the 4AQs may take 3–6 months to develop [37, 38, 106, 107, 116, 118–120]. Some have attributed this to a pharmacodynamic mechanism involving an immune process that requires the observed time to develop. However, the effect is predictable based on pharmacokinetics and the time required to saturate lysosomes (see Chap. 1) [83, 94, 121, 122]. The delayed onset of therapeutic effect of the 4AQs after initiation of therapy can be shortened by using a higher loading dose in the first weeks to months at the price of an increased frequency of gastrointestinal side effects [10, 38, 119, 121, 123]. A doubling of the daily dose is common in the first part of a course of rheumatologic therapy [124]. Beginning with the maintenance dose leads to a slower onset of action [121, 123].

Some clinicians give patients a drug holiday during summer as a way of assessing if the drug is

still required for control of disease activity [1, 123]. This practice should also reduce the probability of developing 4AQR. Rheumatologists frequently decrease the dosing of 4AQs over time. In one series of 758 patients, 84 % of patients begun on 400 mg/day of hydroxychloroquine had their daily doses reduced over time. This is important, since the most common intervention by ophthalmologists is to suggest dosage reductions, not cessation of 4AQs, in response to concerns of retinopathy [125–127].

Approximately 20–50 % of patients with SLE and 75 % of patients with RA eventually have cessation of the drug by 6–10 years of follow-up, mainly because of inefficacy in the case of RA and because of disease remission in the case of SLE [97, 115, 125, 128, 129]. The rate of discontinuation of 4AQs is highest in the first 2 years. In the case of hydroxychloroquine, by 2 years approximately 34 % of patients with SLE and 54 % of patient with RA will have discontinued the drug [8, 125, 128]. Discontinuation of hydroxychloroquine may be less common in patients treated for SLE than RA. In one series, the overall 5-, 10-, and 15-year discontinuation rates were 20 %, 38 %, and 58 %, respectively [115]. Approximately 5 % of patients stop treatment because of ocular problems such as blurred vision or corneal deposits and 5 % stop because of gastrointestinal complaints, rashes, and other side effects. Rates of stopping 4AQs are dependent on the physician, the patient, and their relationship [97]. Some physicians and patients are more willing than others to tolerate less-than-complete control of disease activity and some degree of side effects [97].

Chloroquine is commonly given in doses of 100–250 mg/day for prophylaxis against malaria [130]. It is given as 1,500 mg over 3 days as a treatment for an acute episode of malaria [131]. The most common doses of chloroquine and hydroxychloroquine in clinical use are 250 and 400 mg/day, respectively, regardless of height or weight of the patient [19, 24, 45, 97, 100, 126]. That is, cumulative doses greater than 100 times that used for prophylaxis or treatment of malaria are administered to patients with autoimmune diseases [11, 100, 115, 130]. Before 1980, dosing

of 4AQs was excessive and largely responsible for the greater prevalence of 4AQR reported in this era [10]. For example, in 1978 it was recommended that 400 mg/day of hydroxychloroquine and 250 mg/day of chloroquine were acceptable doses for all adults weighing over 100 lb [10]. The threshold for IBW at which these doses are now recognized to be unacceptable is now recognized to be 135 lb, not 100 lb [32, 127, 132]. More sophisticated regimens seek dosing not greater than 6 mg/kg/day based on actual body weight (ABW) [97] or 6.0–6.5 mg/kg/day based on IBW for hydroxychloroquine [78, 133]. The analogous ceiling for chloroquine is 3.5 mg/kg/day based on IBW. The preferred dosing of 4AQs is based on IBW [80, 114]. If a patient's ABW is less than the IBW based on height, then the ABW should be used to determine dosing [126].

A 250 mg dose of chloroquine phosphate contains 150 mg of chloroquine base [19, 24]. A 200 mg dose of hydroxychloroquine sulfate contains 155 mg of hydroxychloroquine base [1, 19, 24]. The relative potency and toxicity of the two 4AQs is inconsistently portrayed. Some have written that chloroquine is more potent and more toxic than hydroxychloroquine [20, 24, 134], but others have said the reverse. For example, 400 mg of hydroxychloroquine has been assumed to be equivalent to 500 mg of chloroquine [1, 134, 135], yet another report assumes that 400 mg of chloroquine is equivalent to 500 mg of hydroxychloroquine [134]. Other reports state that 400 mg of hydroxychloroquine is equivalent to 250 mg of chloroquine [10, 136].

The best analysis based on multiple forms of administration in different animal models and in human trials is that chloroquine and hydroxychloroquine are equipotent and that chloroquine is approximately twice as toxic [11]. That is, in acute toxicity experiments in animal models, the dose at which 50 % die (LD_{50}) is approximately twice as high with hydroxychloroquine as with chloroquine (see Chap. 3) [11]. Likewise, in subacute and chronic toxicity studies, the tolerated dose for 50 % of animals is approximately twice as high with hydroxychloroquine as with chloro-

quine [11]. Although less rigorous, clinical series in humans suggests the same with a smaller percentage of side effects with hydroxychloroquine compared to chloroquine when the two are given in comparable dosages [137, 138]. Therefore, at the most commonly prescribed daily doses, chloroquine and hydroxychloroquine have been considered equally effective in treating autoimmune diseases with the therapeutic ratio favoring hydroxychloroquine (see Chap. 1).

Reports are inconsistent in the way they report drug concentrations. Plasma, serum, and whole blood concentrations have been used. They are not comparable; plasma concentrations are the lowest, and whole blood concentrations are the greatest. Serum concentrations exceed plasma concentrations because platelets concentrate 4AQs, and upon coagulation of the blood the platelet contents are released into the serum [139]. Plasma levels of chloroquine effective against malaria are 10^{-8} to 10^{-7} M/L [37, 140]. For rheumatological disease higher plasma levels are required—approximately 10^{-6} M/L [34, 37, 71, 89, 140, 141]. Serum concentrations of chloroquine in patients taking chloroquine 250 mg/day for long periods are in the range 6.25×10^{-7} to 1.25×10^{-6} M/L [142]. Therapeutic whole blood concentrations of HC for autoimmune diseases are 8×10^{-7} to 5×10^{-6} M/L, approximately five times higher than plasma concentrations [16, 37, 78, 89]. Using whole blood concentrations is not optimal because 4AQs are preferentially sequestered in erythrocytes and leukocytes which implies that hematocrit and white blood cell count will affect the whole blood concentration in potentially confounding ways. On the other hand, the precision of measurements is higher with whole blood than with plasma, possibly due to the technical difficulty of separating blood cells and platelets from plasma, making whole blood more suited for pharmacokinetic analyses [77].

In a study of patients with rheumatoid arthritis, patients with less morning stiffness and no rheumatoid factor had significantly higher blood concentrations of hydroxychloroquine than patients with more morning stiffness and

presence of rheumatoid factor [143]. Other studies have not found a correlation between plasma concentration and clinical response [77, 139, 144]. In patients taking hydroxychloroquine for RA and SLE, daily dosing at 400 mg/day was associated with wide variability in whole blood concentrations [145]. In a study of 143 patients with SLE, those patients with inactive disease had average whole blood concentrations of $3.37 \times 10^{-6} \pm 1.64 \times 10^{-6}$ M/L compared to $2.17 \times 10^{-6} \pm 1.40 \times 10^{-6}$ in those patients with active disease [145]. Higher rates of efficacy can be assured if dosing is calibrated to yield a whole blood concentration of approximately 3.1×10^{-6} M/L [38, 145]. Variability may be due to lack of adherence to therapy or differences in absorption or metabolism of the drugs by individuals. Because of interindividual variability, in certain patients it may not be possible to reach therapeutic concentrations of 4AQs without exceeding daily dose thresholds based on IBW that are considered high risk for causing retinopathy [145]. Patients taking hydroxychloroquine for graft-versus-host disease have higher whole blood concentration targets of 5×10^{-6} to 1.5×10^{-5} M/L. Concerns over retinopathy in these patients are balanced against the more serious nature of their systemic disease. Effective plasma concentrations and effective in vitro concentrations of the drugs are not necessarily closely related, as the drug concentrations may be higher locally due to intracellular organelle sequestration [139, 140]. Other potential confounders include receptor concentrations, the influence of alcohol and smoking, genetic and gender influences, and age [77]. Perhaps because of inconsistency of results, few clinicians measure plasma concentrations of 4AQs to judge adequacy of a trial of drug [24, 139].

One therapeutic strategy used to reduce the risk of retinopathy yet obtain the beneficial disease modifying effects of antimalarial therapy is to combine chloroquine or hydroxychloroquine with quinacrine, which is not a 4-aminoquinoline and is considered to have a lesser risk of causing retinopathy. In practical terms, the patient is

begun on hydroxychloroquine 400 mg/day or 6.5 mg/kg/day based on IBW, whichever is lower. After 2 months, if the autoimmune disease has not sufficiently responded, quinacrine 100 mg/day is added. After one additional month if a response has been achieved then the hydroxychloroquine is reduced to 200 mg/day [38]. Although the risk of retinopathy with quinacrine is less than with 4AQs, retinopathy has been associated infrequently with quinacrine [25].

2.5 Pregnancy and Lactation

Antimalarials cross the placenta and can concentrate in the eyes of fetal animals in mice and monkey models [64, 146]. Cord blood concentrations of antimalarials are similar to maternal blood levels [147, 148]. Toxicity in the fetus has not been reported. However, the number of mothers who have taken one of the drugs on a daily basis while pregnant and whose offspring have subsequently been examined for retinopathy has been small and the methods for checking retinopathy insensitive (Table 2.5) [149–151]. A randomized control trial with greater than 400 pregnancies per arm would be required to detect a difference in 5 % in pregnancy loss with alpha error of 0.05 and beta error of 0.8 [152]. Such a study is unlikely to be done, and therefore practice is likely to be guided by evidence of lesser quality. In case–control studies and prospective case series, the rates of spontaneous abortion, fetal death, fetal distress, and congenital malformations have not differed, although the studies have been small with little power to detect small differences in rates [152–154]. Flares of lupus among women who stop 4AQs during pregnancy are more frequent than in women who continue these drugs throughout pregnancy [152, 153]. The general consensus is that mothers using antimalarial drugs during pregnancy need not stop them as they do not appear to affect fetal health [147, 150, 153–156]. Dissenting opinion has been published, but it is based on anecdotal associations of fetal abnormalities in mothers taking 4AQs during pregnancy [8, 32, 71, 157].

Table 2.5 4-Aminoquinoline use in pregnancy and the risk of retinopathy in offspring

Study	Examinations done on offspring	Number of offspring with retinopathy/number of pregnant women taking chloroquine	Number of offspring with retinopathy/number of pregnant women taking hydroxychloroquine
Klinger [149]	BCVA, SLE, DFE, CV, some GVF	0/7	0/14
Motta [150]	Inspect anterior segment, pupillary reaction, DFE		0/35
Parke [156]	Funduscopy	0/4	0/4
Costedoat-Chalumeau [148]	NG		0/11

BCVA best corrected visual acuity, SLE slit lamp examination, CV color vision, GVF Goldmann visual fields, NG not given, DFE dilated fundus examination

Data on use of antimalarials by lactating mothers is sparse, but small amounts are excreted into breast milk [147, 158]. In a woman given 800 mg of hydroxychloroquine in the course of 48 h, the concentration of drug in breast milk was 9.5×10^{-9} M/L [159]. Doses delivered to breast-feeding infants have been estimated to be 0.06–0.2 mg/kg/day, far less than the threshold of 6.5 mg/kg/day used to regulate pediatric and adult dosing [148, 152]. The little evidence available suggests that breastfeeding mothers may continue therapy with hydroxychloroquine and chloroquine [6, 147, 150, 158]. If prescription of a 4AQ is considered during pregnancy, then hydroxychloroquine is preferred over chloroquine because it may be less toxic, because hydroxychloroquine has been used as a treatment for antiphospholipid syndrome, and because hydroxychloroquine is less concentrated in breast milk than chloroquine [38].

2.6 Mechanism of Action

2.6.1 Positive Studies on Mechanism of Action of 4-Aminoquinolines

Mechanisms of action of chloroquine and hydroxychloroquine are thought to be the same [160]. The mechanism that has received the most attention involves lysosomotropism, that is, the property that 4AQs accumulate within lysosomes

and other intracellular acidic compartments due to protonation and sequestration of the drug [11, 14, 71, 122, 161]. Uncharged 4AQs readily diffuse into the lysosome, but once protonated at their two basic residues cannot diffuse back out into the cytoplasm [33].

Lysosomes have a pH between four and five maintained by an active transport of protons from the cytosol into the lysosome [38, 122, 162–164]. The cytosol and the extracellular milieu have a pH of approximately 7.4 [122]. Chloroquine is a weak base with $pK_1 = 8.1$ for the amine group at position seven and $pK_2 = 10.1$ for the amine group on the alkyl side chain [52]. Lysosomal concentrations of chloroquine as high as 2×10^{-2} M/L have been measured. [162, 164] The pH of lysosomes exposed to chloroquine increases from the baseline four to six [38, 163]. If the pH gradient is abolished, chloroquine accumulation ceases [164]. Bafilomycin A1, an inhibitor of lysosomal acidification, blocks chloroquine-induced lysosomotropism and toxicity in RPE-19 cell culture [161]. At equilibrium, the ratio of distribution of diacidic bases 4AQs between lysosomes and plasma is given by the ratio (H_L/H_p) , [2] where H_L is the hydrogen ion concentration of the lysosome and H_p is the hydrogen ion concentration of the plasma. Thus the ratio of 4AQs between lysosomes and plasma is approximately 160,000. To maintain osmotic balance as chloroquine enters the lysosome, water accompanies it, swelling the organelle [162].

Although lysosomes are a small fraction of intracellular volume, the large gradient of 4AQ suggests the large volumes of distribution empirically measured in pharmacokinetic studies (see Sect. 2.2.3.2) [71]. Besides the sequestration due to diprotonation, there is also binding to acidic polysaccharides and acidic glycolipids found in lysosomal membranes [122].

The inhibition of lysosomal enzymatic function is hypothesized to be the cause of beneficial effects and retinopathy of the 4AQs [29]. Once inside lysosomes, 4AQs inhibit the lysosomal activity of cathepsin B and enzymes involved in degradation of mucopolysaccharides and proteins [33, 71, 118, 165, 166]. Elevation of lysosomal pH by 4AQs inhibits MHC class II-dependent antigen processing and presentation by monocytes [167]. The raised pH increases invariant chain (Ii) dissociation from the MHC class II molecule via decreased activity of aspartyl protease, cathepsin D, and cathepsin B, which cleave Ii from the MHC class II molecule [78]. This decreases antigen binding to the surface of the professional APCs (see Chap. 1). The 4AQs also inhibit lysosomal pinocytosis which inhibits digestion of exogenous proteins into antigenic peptides. With decreased peptide loading into the groove between α and β chains of MHC class II molecules there are fewer peptide-MHC class II complexes for transport to the cell surface and presentation to CD4 T cells (see Chap. 1) [168]. Self-antigens typically have lower affinity for MHC class II molecules than non-self-antigens, thus 4AQs have a preferential inhibitory effect on autoimmunity, and do not impair immunity to exogenous agents [38]. The net effect of 4AQs is dysfunctional protein processing, receptor recycling, protein secretion, reduced production of cytokines and immune mediators, reduced lymphocyte production, and reduced natural killer cell activity [81].

Toxic effects occur when lysosomes exposed to 4AQs accumulate ubiquitinated proteins leading to apoptosis, disruption of autophagy, and oxidative injury [161]. Swollen lysosomes combine with phagosomes containing photoreceptor outer segments to form lamellar inclusion bodies (myeloid or myelin bodies, see Chap. 1) [2, 169].

The increased lysosomal pH inhibits receptor-enzyme dissociation, which may have toxic effects [11]. The sequestered cell membranes and included protein receptors in the myelin bodies are disrupted in their normal recycling which depletes the population of surface membrane receptors without a change in receptor affinity. Disrupted interaction of retinal neuronal and RPE cells with the local environment results in toxicity and eventually morphologic damage [2].

Although lysosomotropic effects have received the most attention, 4AQs affect many other cellular processes, and it can be confusing to tie them together in a comprehensible way. One way to do so is to organize them by their dependence on concentration. Some authors contend that mechanisms that depend on concentrations higher than 1×10^{-6} M/L in vitro are not relevant to clinical effects. They reason that such concentrations are higher than those expected to be found clinically in the plasma [71, 78, 142, 170]. For example, although hydroxychloroquine at a concentration of 1×10^{-4} M/L affects IL-17 and other cytokine levels produced by the peripheral blood mononuclear cells of patients with RA and SLE in vitro, we are uncertain that this is a physiologic pathway [171]. In another example, significant inhibition of immunoglobulin synthesis and secretion by rat plasma cells in vitro required concentration of 9×10^{-4} M/L chloroquine [172]. These levels of drug are not present in whole blood or plasma, but it is possible that these levels are relevant in intracellular compartments, which are known to have higher concentrations than in plasma [2, 80, 89, 140, 142]. Liver-to-plasma ratios of 200–500 have been recorded in rat models of chloroquine pharmacokinetics (Table 2.3) [89]. In this view, therefore, mechanisms operative at concentrations up to 10^{-4} M may be clinically relevant. Given the persistence of controversy, the coverage here will include mechanisms found at higher concentrations grouped by order of magnitude [37]. Table 2.6 provides a non-exhaustive list of the effects of the 4AQs grouped by concentration dependence.

Pharmacologic Tools for Dissecting the Mechanism of Action of 4-Aminoquinolines

A recurring theme in papers written on the mechanism of action of chloroquine and hydroxychloroquine is the use of bafilomycin and ammonium acetate. Ammonium acetate is a cation that crosses cellular membranes easily. It can be used to flatten proton gradients across cell membranes [173]. Bafilomycin is a drug that inhibits the vacuolar proton pump and can decrease the acidification of intracellular vacuoles [173]. It provides a tool for diminishing the uptake of 4AQs by lysosomes and dissecting this mechanism from several candidates.

Table 2.6 Mechanisms of action of 4-aminoquinolines

Mechanism	Concentration range at which relevant (M)
Chloroquine inhibited the interaction of memory B cells but not unprimed B cells specific for foreign antigens [37, 178]	10^{-11} to 10^{-8}
Chloroquine inhibited DNA synthesis and IL-6 secretion by human peripheral blood mononuclear cells stimulated by foreign antigens [173]	10^{-8} to 10^{-7}
1. 4AQs attached to ferritroporphyrin IX (FP) to form a toxic complex that increased the membrane permeability of erythrocytes parasitized by malaria protozoans and the protozoans themselves. The erythrocytes and protozoans lost potassium, swelled and were lysed [2, 11, 37, 164, 179, 180]	10^{-7} to 10^{-6}
2. 4AQs inhibited professional APCs from stimulating primed T cells [78, 118]. 4AQs decreased levels of serum IL-1 β , IL-2, IL-4, IL-6, IL-17, IL-18, IL-22, IFN- γ , and TNF- α [24, 38, 44, 78, 87, 142, 167, 181]	
3. Chloroquine reduced IL-1 β and IL-6 mRNA levels by reducing their stability through a pH dependent mechanism in human monocyte cell culture [182]. Transcription of DNA to RNA was not blocked [182]	
4. Inhibition of TNF- α expression occurred by blocking transcription of DNA into mRNA and not by a mechanism involving sequestration of chloroquine in lysosomes as bafilomycin did not block the effect of chloroquine [183]	
5. In a rat blood-vessel model for assessing prostaglandin inhibition, chloroquine inhibited prostaglandin effects [184]	
6. In patients taking chloroquine for SLE and RA, circulating lymphocytes contained higher numbers of myelin bodies (see Chap. 1) compared to lymphocytes from control patients not taking these drugs and non-rheumatoid control subjects. These were associated with inhibition of lysosomal enzymes cathepsin B ₁ and phospholipase A ₂ [71, 140, 169, 176, 185, 186]. Chloroquine also inhibited mucopolysaccharidases, alcohol dehydrogenase, and acid phosphodiesterase within lysosomes [166, 187, 188]. Elevation of pH, as would occur in lysosomes exposed to chloroquine, increased the inhibitory potency [185]	
7. Chloroquine inhibited leukotriene release in human lung tissue cell culture that was overcome by arachidonic acid, suggesting inhibition of phospholipase A ₂ [140]	
8. Chloroquine inhibited the C _p G-oligodeoxynucleotide (C _p G-ODN)-mediated blockade of apoptosis and inhibited IL-6 secretion in a murine B cell lymphoma model [173]	
9. Hydroxychloroquine decreased HIV viral RNA titers [136]	
10. Chloroquine inhibited polypeptide synthesis in rat liver cell free extracts by binding to the polynucleotide and preventing subsequent formation with a polynucleotide-ribosome complex [189]. There was no effect on polypeptide chain initiation or termination [190]	

(continued)

Table 2.6 (continued)

Mechanism	Concentration range at which relevant (M)
<ol style="list-style-type: none"> 1. Chloroquine inhibited chemotaxis of polymorphonuclear leukocytes [71, 191, 192] 2. Chloroquine inhibited production of immunoglobulin secreting cells in response to <i>Staphylococcus aureus</i> by interfering with monocyte secretion of IL-1 in human peripheral mononuclear cells [142] 3. Chloroquine protected lysosomes against rupture by lysolecithin, progesterone, etiocholanolone, vitamin A, streptolysin S, ultraviolet irradiation, and incubation at neutral pH [193]. 4AQs stabilized lysosomal membranes inhibiting the release of lysosomal enzymes and receptor recycling [168] 4. Chloroquine inhibited cytokine secretion by mononuclear cells and binding of inositol 1,4,5-triphosphate to its intracellular receptor [173] 5. 4AQs inhibited activation of toll-like receptors TLR-3, TLR-7, and TLR-9 by raising intralysosomal pH [14, 24, 38, 165, 167, 194–196] 6. Chloroquine suppressed secretion of catecholamines in bovine adrenal medullary cells by interfering with calcium uptake [197] 7. Chloroquine caused a decrease in lysosomal β-glucuronidase and arylsulfatase A activity in cultured human fibroblasts [198] 8. Hydroxychloroquine reduced binding of β2-glycoprotein by antiphospholipid antibodies on phospholipid bilayers [16] 9. 4AQs increased the activity of HMG-CoA reductase and decreased serum cholesterol and atherosclerosis in SLE [60, 129, 199, 200] 10. 4AQs reduced serum glucose and incidence of diabetes mellitus in SLE [16, 129, 201, 202] 11. 4AQs had an antithrombotic effect in SLE [16, 129, 203]. 4 AQs prevented platelet alpha-granule release in vitro [170]. They inhibited release of arachidonic acid from stimulated platelets [14, 24] 	10 ⁻⁶ to 10 ⁻⁵
<ol style="list-style-type: none"> 1. Chloroquine inhibited human lymphocyte proliferation stimulated by phytohemagglutinin or concanavalin A [71, 142]. The effect occurred when drug was added early in the culture, but not later, indicating an action involving lysosomes and not via DNA binding [204] 2. Chloroquine inhibited digestion of endocytosed proteins in mouse peritoneal macrophages [205] 3. Chloroquine inhibited proteolytic conversion of a proform of complement C3 in cultured rat hepatocytes [206] 4. Chloroquine inhibited phosphorylation of extracellular signal-regulated kinases (ERK) 1 and 2 and mitogen-activated protein kinases [38] 5. Chloroquine inhibited mitochondrial respiration [12] 6. Chloroquine inhibited DNA polymerase [71] 7. Chloroquine competitively inhibited cholinesterase in plasma and human red blood cells [207] 8. 4AQs inhibited expression on the cell surface of TNF receptors without affecting levels of TNF receptor mRNA in a human histiocytic lymphoma cell line culture and in human peripheral monocytes suggesting inhibition of transport of the receptors from the cytosol to the cell surface [208] 9. Chloroquine inhibited endotoxin-stimulated TNF-α, IL-1β, and IL-6 from human whole blood and monocytes by an effect on DNA transcription and not a lysosomotropic mechanism [181, 183] 10. Hydroxychloroquine induced apoptosis in human lymphocytes from normal subjects and synoviocytes taken from RA patients [209, 210]. Chloroquine inhibited extracellular signal-regulated kinase (ERK) in HeLa cells which promoted susceptibility to Fas-mediated apoptosis [211] 11. Chloroquine blocked DNA repair [212] 	10 ⁻⁵ to 10 ⁻⁴

(continued)

Table 2.6 (continued)

Mechanism	Concentration range at which relevant (M)
1. Chloroquine inhibited ¹²⁴ I-mannose-bovine serum albumin ingestion by inhibiting receptor recycling in rat alveolar macrophages [213]	10 ⁻⁴ to 10 ⁻³
2. Chloroquine stabilized erythrocyte membranes [34]	
3. Chloroquine inhibited cathepsin B and diamine oxidase enzyme activities and inhibited protein synthesis [11, 14]	
4. Chloroquine attached to double-stranded DNA [173, 214]. Chloroquine attached to single stranded DNA less avidly [173]	
5. Neutrophil phagocytosis was inhibited [192]	
6. Neutrophil oxidative metabolism was inhibited [192]	
7. Proteolytic processing of secretory proteins by hepatocytes was inhibited [206]	
8. Chloroquine inhibited DNA and RNA biosynthesis and was associated with degradation of ribosomes and ribosomal RNA in a bacterial model [215, 216]	
9. Chloroquine raised the pH in the food vacuole of malaria parasites inhibiting the digestion of hemoglobin [71]. Resistant strains of malaria accumulated less chloroquine than those of nonresistant parasites [34]	
10. 4AQs inhibited protein synthesis but not uptake of amino acids in beef RPE cell culture [63].	
1. Chloroquine decreased serum phospholipids concomitant with the appearance of multilamellar myeloid bodies in the RPE, photoreceptors, and ganglion cells in a rat model [60]	Concentrations not reported
2. 4AQs inhibited antigen presentation, chemotaxis, phagocytosis, calcium receptor signaling of T and B cells, and matrix metalloproteinase activity [14]. Chloroquine prevented T cell responses to antigenic proteins but not antigenic peptides implying a mechanism of inhibiting the cleavage of antigenic proteins by macrophages [118]	
3. Hydroxychloroquine increased Fas-mediated apoptosis of synoviocytes [168]	
4. 4AQs inhibited gene expression in T cells in response to immune stimuli [30]	
5. Chloroquine inhibited autophagy in human RPE cells [161]. Inhibition of vacuolar H ⁺ -ATPase by bafilomycin A1 blocked this effect implying that chloroquine acted as a lysosomotropic agent. [161] In a rat pancreas model chloroquine increased the volume of autophagic vacuoles and increased proteolytic lysosomal enzyme activities [217]	
6. Hydroxychloroquine inhibited collagen-induced platelet aggregation and alpha-granule release [16, 170]	
7. Chloroquine inhibited protein synthesis [189]	
8. Chloroquine disrupted the blood-retina barrier as determined by fluorophotometry in patients with retinopathy [218]	
9. Chloroquine inhibited oxidative enzymes found in the ellipsoids of the inner segments of photoreceptors [219]	
10. 4AQs-induced apoptosis of umbilical vascular endothelial cells, peripheral blood lymphocytes, and rheumatoid synoviocytes [87]	
11. Chloroquine decreased retinal glucose-6-phosphate dehydrogenase activity leading to decreased retinal glutathione concentration which increases retinal lipid peroxidation [29]	
12. Chloroquine inhibited low-density lipoprotein uptake or binding to cell surface receptors in human fibroblasts. Degradation of low-density lipoproteins by lysosomes was inhibited [220]. Cholesterol ester formation was stimulated and 3-hydroxy-3-methylglutaryl-coenzyme A activity was inhibited. As a result LDL accumulated within the cell [220]	
13. Chloroquine depleted acid hydrolase receptors on the cell surface and inhibited pinocytosis of acid hydrolases [168]. Secretion of newly synthesized acid hydrolases bearing phosphomannosyl recognition markers was increased [168]	
14. Chloroquine increased nitric oxide synthase activity in endothelial cells [221]	

(continued)

Table 2.6 (continued)

Mechanism	Concentration range at which relevant (M)
15. Chloroquine reduced incorporation of labeled sulfate into cartilage polysaccharide sulfates in a rat model [90]	
16. Chloroquine intercalated between base pairs of DNA as evidenced by the increase in viscosity of DNA exposed to chloroquine [14, 214, 222]	
17. Chloroquine inhibited the mitogenesis in polymorphonuclear leukocytes stimulated by zymosan [192]	
18. Chloroquine inhibited spontaneous and interferon-upregulated natural killer activity in patients with RA [221]	
19. 4AQs interfered with the binding of antiphospholipid antibodies to annexin A5, a potent anticoagulant [24, 81]	
20. 4AQs reduced lipid and triglyceride levels, increased low-density lipoprotein receptor activity, and increased HMG-CoA reductase activity, reducing cardiovascular disease risk [24, 81]. 4AQs decreased the incidence of diabetes and had a hypoglycemic effect, decreased glycosylated hemoglobin levels in patients with diabetes, and improved glucose tolerance in patients with type II diabetes [14, 81, 126]	
21. 4AQs inhibited TLR9-mediated stimulation of perilipin-3 in macrophages [24]	
22. Chloroquine had an antineoplastic effect producing a reduction in the incidence of Burkitt's lymphoma among patients in Tanzania who took the drug for malaria. Chloroquine-induced apoptosis in malignant B cells in patients with chronic lymphocytic leukemia [14]. Hydroxychloroquine had an anti-breast cancer effect. Chloroquine had an anti-colon cancer effect in a mouse model, induced cell death in human A 549 lung cancer cells, and produced better survival in patients with glioblastoma multiforme [14]	
23. 4AQs promoted oxidation of cysteine residues in the peripherin/rds protein leading to disorganization of photoreceptor outer segments and cell death [29]	
24. Chloroquine had a direct depressant effect on smooth muscle of the gut, arteries, trachea, and ciliary body, which might explain the mild ileus and temporary presbyopia that patients often experience after starting the drug [100]	
25. 4AQs inhibit replication of HIV, SARS coronavirus, and influenza [10, 38, 136]	
26. Chloroquine blocked production of IL-1 β , IL-6, and TNF- α caused by ultraviolet irradiation of skin of normal subjects but had no effect on expression of these cytokines in unirradiated skin [223]	
27. Chloroquine stimulated nitric oxide production in the kidney and brain with increased vasopressin and natriuresis [224]	
28. Chloroquine enhanced CD8+ T cell responses by APCs against soluble antigens [225]	

4AQ 4-aminoquinoline, *4AQR* 4-aminoquinoline retinopathy, *IL* interleukin, *IFN* interferon, *TNF* tumor necrosis factor, *DNA* deoxyribonucleic acid, *RNA* ribonucleic acid, *SLE* systemic lupus erythematosus, *RA* rheumatoid arthritis, *RPE* retinal pigment epithelium, *HIV* human immunodeficiency virus, *TLR* toll-like receptor, *HMG-CoA* 3-hydroxy-3-methylglutaryl-coenzyme A reductase, *mRNA* mitochondrial ribonucleic acid, *LDL* low-density lipoprotein, *SARS* severe acute respiratory syndrome, *APC* antigen presenting cell

2.6.2 Negative Studies on Mechanism of Action of 4-Aminoquinolines

A number of studies have excluded mechanisms by which 4AQs produce effects. Hydroxychloroquine does not inhibit cyclo-

oxygenases or decrease prostaglandin production [94]. Binding of 4AQs to DNA is not thought to be a clinically important mechanism; mefloquine does not bind to DNA, yet is an effective antimalarial drug [164]. The beneficial effects of 4AQs on polymorphous light eruptions are not due to a light-screening effect as they did not act as a

physical barrier to the passage of ultraviolet radiation [86]. Chloroquine did not affect mitochondrial respiration and oxidative phosphorylation in mouse-liver homogenates or rat-liver mitochondria [90]. Neither did it affect adenosine triphosphate activity of cow visual pigment extracts [174]. Chloroquine did not affect the internalization of oligonucleotides via acidified vesicles [173].

2.6.3 Drug Interactions

Proton pump inhibitors such as omeprazole may inhibit the accumulation of 4AQs in lysosomes by decreasing the pH of these organelles. A potentially antagonizing effect of such drugs on the immunomodulating effects of 4AQs has been hypothesized [175]. Drugs that inhibit CYP3A4 such as ketoconazole and cimetidine can increase plasma levels of 4AQs [93, 95].

2.7 Summary of Key Points

- The pharmacology of chloroquine and hydroxychloroquine is similar.
- The molecular weights of chloroquine and hydroxychloroquine are 320 and 336, respectively.
- Chloroquine and hydroxychloroquine are alkylated 4AQs that are water soluble, weak, amphiphilic bases that readily cross cell membranes.
- Melanin can bind 3 % of its weight in 4AQs, but whether this protects against, exacerbates, or has no effect on the risk of retinopathy is unknown.
- The 4AQs are lysosomotropic by virtue of protonation and trapping inside acidic lysosomes.
- Absorption of 4AQs is nearly complete with a peak plasma concentration at 3–12 h after an oral dose, a volume of distribution greater than 40,000 L, and a terminal elimination half-life of approximately 40 days.
- Equilibrium plasma concentrations depend on daily dose and IBW.
- With chronic ingestion of 4AQs in non-albinotic mammals, the tissue concentration of drug is highest in the uvea and RPE with a concentration 10,000 times that of plasma. In albinotic mammals, uveal drug concentrations approximate that of the heart. The 4AQs are lipophobic with concentrations in fat that are one-tenth that of plasma.
- The major metabolites of 4AQs are the desethyl and bisdesethyl derivatives of the parent drugs. The metabolites are pharmacologically active. CYP2C3 and CYP3A4 are responsible for 80 % of the metabolism of 4AQs.
- Forty to 60 % of 4AQs is excreted by the kidneys, 8–25 % is excreted in the feces, 5 % is sloughed off with the skin, and 25–45 % is stored in lean tissues.
- Renal and hepatic insufficiency leads to higher plasma concentrations for a given daily dose and raise the risk of toxicity.
- The clinical effects of 4AQs take 3–6 months to develop when no loading doses are used. The time course follows the pharmacokinetics to steady-state concentrations.
- Four hundred milligram per day of hydroxychloroquine and 250 mg/day of chloroquine are acceptable if the lesser of a patient's IBW and ABW is 135 lb or more.
- Hydroxychloroquine and chloroquine are equipotent but chloroquine is more toxic; thus the therapeutic ratio is higher for hydroxychloroquine.
- Whole blood concentrations of 4AQs are approximately five times the plasma concentrations, are more precise, and are favored for pharmacokinetic measurements.
- A clinically therapeutic concentration of a 4AQ is greater than 3×10^{-6} M/L.
- 4AQs should not be stopped during pregnancy and lactation.
- There are more than 20 actions of 4AQs. The lysosomotropic mechanisms are the most important clinically. Because of these effects, the 4AQs have a dichotomous effect on T cells. They inhibit CD4 T cell stimulation but promote CD8 T cell stimulation. The combined effect is a beneficial action in autoimmunity without a penalty of increased opportunistic infections.

References

- Bunch TW, O'Duffy JD. Disease modifying drugs for progressive rheumatoid arthritis. *Mayo Clin Proc.* 1980;55:161–79.
- Mackenzie AH. Pharmacologic actions of 4-aminoquinoline compounds. *Am J Med.* 1983; 75:1–7.
- Berliner RW, Earle Jr DP, Taggart JV, Zubrod CG, Welch WJ, Conan NJ, Bauman E, Scudder ST, Shannon JA. Studies on the chemotherapy of the human malarial. VI. The physiological disposition, antimalarial activity, and toxicity of several derivatives of 4-aminoquinoline. *J Clin Invest.* 1948;27:98–107.
- Bothwell B, Furst DE. Hydroxychloroquine. In: Day RO, Furst DE, editors. *Antirheumatic therapy: actions and outcomes.* Basel: Piet L.C.M. van Riel and Barry Bresnihan; 2005. p. 81–92.
- Wallace DJ. Antimalarials—the ‘real’ advance in lupus. *Lupus.* 2001;10:385–7.
- Rynes RI, Parke AL. Introduction to symposium on antimalarial therapy and lupus. *Lupus.* 1993;2:S1.
- Wallace DJ. The history of antimalarials. *Lupus.* 1996;5:S2–3.
- Rynes RI. Antimalarial drugs in the treatment of rheumatological diseases. *Br J Rheumatol.* 1997;36: 799–805.
- Hobbs HE, Calnan CD. Visual disturbances with anti-malarial drugs, with particular reference to chloroquine keratopathy. *Arch Dermatol.* 1959;80:557–63.
- Dubois EL. Antimalarials in the management of discoid and systemic lupus erythematosus. *Semin Arthritis Rheum.* 1978;8:33–51.
- McChesney EQ, Fitch CD. 4-Aminoquinolines. In: Peters W, Richards WHG, editors. *Antimalarial drugs II. Current antimalarials and new drug developments.* Berlin: Springer; 1984. p. 3–60.
- Thompson PE, Webel LM. *Antimalarial agents: chemistry and pharmacology.* New York: Academic Press; 1972. p. 150–96.
- Tzekov R. Ocular toxicity due to chloroquine and hydroxychloroquine: electrophysiological and visual function correlates. *Doc Ophthalmol.* 2005;110: 111–20.
- Ben-Zvi I, Kivity S, Langevitz P. Hydroxychloroquine: from malaria to autoimmunity. *Clin Rev Allergy Immunol.* 2012;42:145–53.
- Lozier JR, Friedlander MH. Complications of anti-malarial therapy. *Int Ophthalmol Clin.* 1989;29: 172–8.
- Rand JH, Wu XX, Quinn AS, Chen PP, Hathcock JJ, Taatjes DJ. Hydroxychloroquine directly reduces the binding of antiphospholipid antibody-beta2-glycoprotein I complexes to phospholipid bilayers. *Blood.* 2008;112:1687–95.
- Pillsbury DM, Jacobson C. Treatment of chronic discoid lupus erythematosus with chloroquine (Aralen). *JAMA.* 1954;154:1330–3.
- The Canadian Hydroxychloroquine Study Group. A randomized study of the effect of withdrawing hydroxychloroquine sulfate in systemic lupus erythematosus. *New Engl J Med.* 1991;324: 150–4.
- Banks CN. Melanin: blackguard or red herring? Another look at chloroquine retinopathy. *Aust N Z Ophthalmol.* 1987;15:365–70.
- Goldman L, Preston RH. Reactions to chloroquine observed during the treatment of various dermatologic disorders. *Am J Trop Med Hyg.* 1957;6: 654–7.
- Hobbs HE, Sorsby A, Freedman A. Retinopathy following chloroquine therapy. *Lancet.* 1959;2: 478–80.
- Bernstein H. Ocular safety of hydroxychloroquine sulfate (Plaquenil). *South Med J.* 1992;85:274–9.
- Shearer RV, Dubois EL. Ocular changes induced by long-term hydroxychloroquine (Plaquenil) therapy. *Am J Ophthalmol.* 1967;64:245–52.
- Wallace DJ, Gudsoorkar VS, Weisman MH, Venuturupalli SR. New insights into mechanisms of therapeutic effects of antimalarial agents in SLE. *Nat Rev Rheumatol.* 2012;8:522–33.
- Browning DJ. Bull's-eye maculopathy associated with quinacrine therapy for malaria. *Am J Ophthalmol.* 2004;137:577–9.
- Chloroquine. DrugBank: open data drug & drug target database. 2005. <http://www.drugbank.ca/drugs/DB00608>. Accessed 22 Aug 2013.
- Hydroxychloroquine. DrugBank: open data drug & drug target database. 2007. <http://www.drugbank.ca/drugs/DB01611>. Accessed 22 Aug 2013.
- Potts AM. The reaction of uveal pigment in vitro with polycyclic compounds. *Invest Ophthalmol.* 1964;3:405–16.
- Toler SM. Oxidative stress plays an important role in the pathogenesis of drug-induced retinopathy. *Exp Biol Med.* 2004;229:607–15.
- Sundelin SP, Terman A. Different effects of chloroquine and hydroxychloroquine on lysosomal function in cultured retinal pigment epithelial cells. *APMIS.* 2002;110:481–9.
- Ferrari V, Cutler DJ. Kinetics and thermodynamics of chloroquine and hydroxychloroquine transport across the human erythrocyte membrane. *Biochem Pharmacol.* 1991;41:23–30.
- Tanenbaum L, Tuffanelli DL. Antimalarial agents: chloroquine, hydroxychloroquine, and quinacrine. *Arch Dermatol.* 1980;116:587–91.
- Wibo M, Poole B. Protein degradation in cultured cells. II. The uptake of chloroquine by rat fibroblasts and the inhibition of cellular protein degradation and cathepsin B1. *J Cell Biol.* 1974;63:430–40.
- Homewood CA, Warhurst DC, Peters W, Baggaley VC. Lysosomes, pH, and anti-malarial action of chloroquine. *Nature.* 1972;235:50–2.
- Stepien KB, Wilczok T. Studies of the mechanism of chloroquine binding to synthetic dopa-melanin. *Biochem Pharmacol.* 1982;31:3359–65.

36. Jailer JW, Zubrod CG, Rosenfeld M, Shannon JA. Effect of acidosis and anoxia on the concentration of quinacrine and chloroquine in blood. *J Pharmacol Exp Ther.* 1948;92:345–51.
37. Titus EO. Recent developments in the understanding of the pharmacokinetics and mechanism of action of chloroquine. *Ther Drug Monit.* 1989;11:369–79.
38. Kalia S, Dutz JP. New concepts in antimalarial use and mode of action in dermatology. *Dermatol Ther.* 2007;20:160–74.
39. Kishimoto M, Deshpande GA, Yokogawa N, Buyon JP, Okada M. Use of hydroxychloroquine in Japan. *J Rheumatol.* 2012;39:1296–7.
40. Araiza-Casillas R, Cardenas F, Morales Y, Cardiel MH. Factors associated with chloroquine-induced retinopathy in rheumatic diseases. *Lupus.* 2004;13:119–24.
41. Easterbrook M. The ocular safety of hydroxychloroquine. *Semin Arthritis Rheum.* 1993;23:62–7.
42. Meinao IM, Sato EI, Andrade LEC, Ferraz MB, Atra E. Controlled trial with chloroquine diphosphate in systemic lupus erythematosus. *Lupus.* 1996;5:237–41.
43. Akman F, Cerman E, Yenice O, Kazokoglu H. Two cases with chloroquine and hydroxychloroquine maculopathy. *Marmara Med J.* 2011;24:68–72.
44. Wozniacka A, Lesiak A, Narbutt J, McCauliffe DP, Sysa-Jedrzejowska A. Chloroquine treatment influences proinflammatory cytokine levels in systemic lupus erythematosus patients. *Lupus.* 2006;15:268–75.
45. Bartel PR, Roux P, Robinson E, Anderson IF, Brighton SW, Van der Hoven HJ, Becker PJ. Visual function and long-term chloroquine treatment. *S Afr Med J.* 1994;84:32–4.
46. Missner S, Kellner U. Comparison of different screening methods for chloroquine/hydroxychloroquine retinopathy: multifocal electroretinography, color vision, perimetry, ophthalmoscopy, and fluorescein angiography. *Graefes Arch Clin Exp Ophthalmol.* 2012;250:319–25.
47. Easterbrook M. Ocular effects and safety of antimalarial agents. *Am J Med.* 1988;85:23–9.
48. Parker FS, Irvin JL. The interaction of chloroquine with nucleic acids and nucleoproteins. *J Biol Chem.* 1952;199:897–909.
49. Tanaka M, Ono C, Yamada M. Absorption, distribution and excretion of ¹⁴C-levofloxacin after single oral administration in albino and pigmented rats: binding characteristics of levofloxacin-related radioactivity to melanin in vivo. *J Pharm Pharmacol.* 2004;56:463–9.
50. Tjalve H, Nilsson M, Larsson B. Studies on the binding of chlorpromazine and chloroquine to melanin in vivo. *Biochem Pharmacol.* 1981;30:1845–7.
51. Larsson BS. Interaction between chemicals and melanin. *Pigment Cell Res.* 1993;6:127–44.
52. Larsson B, Tjalve H. Studies on the mechanism of drug-binding to melanin. *Biochem Pharmacol.* 1979;28:1181–7.
53. Ono C, Yamada M, Tanaka M. Absorption, distribution and excretion of ¹⁴C-chloroquine after single oral administration in albino and pigmented rats: binding characteristics of chloroquine-related radioactivity to melanin in-vivo. *J Pharm Pharmacol.* 2003;55:1647–54.
54. Tanaka M, Takashina H, Tsutsumi S. Comparative assessment of ocular tissue distribution of drug-related radioactivity after chronic oral administration of C14-levofloxacin and C14-chloroquine in pigmented rats. *J Pharm Pharmacol.* 2004;56:977–83.
55. Salazar-Bookaman MM, Wainer I, Patil PN. Relevance of drug-melanin interactions to ocular pharmacology and toxicology. *J Ocul Pharmacol.* 1994;10:217–39.
56. Leblanc B, Jezequei S, Davies T, Hanton G, Taradach C. Binding of drugs to eye melanin is not predictive of ocular toxicity. *Regul Toxicol Pharmacol.* 1998;28:124–32.
57. Feeney L. Lipofuscin and melanin of human retinal pigment epithelium. Fluorescence, enzyme cytochemical, and ultrastructural studies. *Invest Ophthalmol Vis Sci.* 1978;17:583–600.
58. Boulton M. Ageing of the retinal pigment epithelium. *Prog Retin Eye Res.* 1991;11:125–51.
59. Ivanina TA, Zueva MV, Lebedeva MN, Bogoslovsky AI, Bunin AJ. Ultrastructural alterations in rat and cat retina and pigment epithelium induced by chloroquine. *Graefes Arch Clin Exp Ophthalmol.* 1983;220:32–8.
60. Gaafar KM, Abdel-Khalek LR, El-Sayed NK, Ramadan GA. Lipidemic effect as a manifestation of chloroquine retinotoxicity. *Arzneimittelforschung.* 1995;45:1231–5.
61. Wolfe F, Marmor MF. Rates and predictors of hydroxychloroquine retinal toxicity in patients with rheumatoid arthritis and systemic lupus erythematosus. *Arthritis Care Res.* 2010;62:775–84.
62. Marmor MF. Comparison of screening procedures in hydroxychloroquine toxicity. *Arch Ophthalmol.* 2012;130:461–9.
63. Gonasun LM, Potts AM. In vitro inhibition of protein synthesis in the retinal pigment epithelium by chloroquine. *Invest Ophthalmol Vis Sci.* 1974;13:107–15.
64. Mason CG. Ocular accumulation and toxicity of certain systemically administered drugs. *J Toxicol Environ Health.* 1977;2:977–95.
65. Kasuya Y, Miyata H, Watanabe M. Toxicological studies on the chloroquine-melanin affinity in vivo and in vitro in relation to chloroquine retinopathy. *J Toxicol Stud.* 1976;1:32–8.
66. Feeney-Burns L, Hilderbrand ES, Eldridge S. Aging human RPE: morphometric analysis of macular, equatorial, and peripheral cells. *Invest Ophthalmol Vis Sci.* 1984;25:195–200.
67. Iredale J, Fieger H, Wainer IW. Determination of the stereoisomers of hydroxychloroquine and its major metabolites in plasma and urine following a single

- oral administration of racemic hydroxychloroquine. *Semin Arthritis Rheum.* 1993;23:74–81.
68. Ducharme J, Farinotti R. Clinical pharmacokinetics and metabolism of chloroquine. Focus on recent advancements. *Clin Pharmacokinet.* 1996;31:257–74.
 69. Rollo IM. Drugs used in the chemotherapy of malaria. In: Goodman LS, Gilman A, editors. *The pharmacological basis of therapeutics.* New York: Macmillan; 1975. p. 1045–68.
 70. Gustafsson LL, Walker O, Alvan G, Beermann B, Estevez F, Gleisner L, Lindstrom B, Sjoqvist F. Disposition of chloroquine in man after single intravenous and oral doses. *Br J Clin Pharmacol.* 1983;15:471–9.
 71. Tett S, Cutler D, Day R. Antimalarials in rheumatic diseases. *Baillieres Clin Rheumatol.* 1990;4:467–89.
 72. Laaksonen AL, Koskiahde V, Juva K. Dosage of antimalarial drugs for children with juvenile rheumatoid arthritis and systemic lupus erythematosus. A clinical study with determination of serum concentrations of chloroquine and hydroxychloroquine. *Scand J Rheumatol.* 1974;3:103–8.
 73. Albert DA, Debois LKL, Lu KF. Antimalarial ocular toxicity, a critical appraisal. *J Clin Rheumatol.* 1998;4:57–62.
 74. McChesney EW. Animal toxicity and pharmacokinetics of hydroxychloroquine sulfate. *Am J Med.* 1983;75:11–8.
 75. Tett SE, Cutler DJ, Day RO, Brown KF. A dose-ranging study of the pharmacokinetics of hydroxychloroquine following intravenous administration to healthy volunteers. *Br J Clin Pharmacol.* 1988;26:303–13.
 76. Tett SE, Cutler DJ. Apparent dose-dependence of chloroquine pharmacokinetics due to limited assay sensitivity and short sampling times. *Eur J Clin Pharmacol.* 1987;31:729–31.
 77. Munster T, Gibbs JP, Shen D, Baethge BA, Botstein GR, Caldwell J, Dietz F, Ettlenger R, Golden HE, Lindsley H, et al. Hydroxychloroquine concentration-response relationships in patients with rheumatoid arthritis. *Arthritis Rheum.* 2002;46:1460–9.
 78. Schultz KR, Gilman AL. The lysosomotropic amines, chloroquine and hydroxychloroquine: a potentially novel therapy for graft-versus-host disease. *Leuk Lymphoma.* 1997;24:201–10.
 79. Buchanan N, Can der Walt LA. The binding of chloroquine to normal and kwashiorkor serum. *Am J Trop Med Hyg.* 1977;26:1025–7.
 80. Mackenzie AH. Dose refinements in long-term therapy of rheumatoid arthritis with antimalarials. *Am J Med.* 1983;75:40–5.
 81. Katz SJ, Russell AS. Re-evaluation of antimalarials in treating rheumatic diseases: re-appreciation and insights into new mechanisms of action. *Curr Eye Res.* 2011;23:278–81.
 82. Lawwill T, Appleton B, Altstadt L. Chloroquine accumulation in human eyes. *Am J Ophthalmol.* 1968;65:530–2.
 83. Goldstein A, Aronow L, Kalman SM. *Principles of drug action: the basis of pharmacology.* New York: Wiley; 2013.
 84. Rowland M, Tozer TN. *Clinical pharmacokinetics and pharmacodynamics. Concepts and applications.* Philadelphia: Wolters Kluwer; 2011. p. 579.
 85. Rubin M, Bernstein H, Zvaifler NJ. Studies on the pharmacology of chloroquine. Recommendations for the treatment of chloroquine retinopathy. *Arch Ophthalmol.* 1963;70:474–81.
 86. Shaffer B, Cahn MM, Levy EJ. Absorption of anti-malarial drugs in human skin: spectroscopic and chemical analysis in epidermis and corium. *J Invest Dermatol.* 1958;30:341–5.
 87. Ramser B, Kokot A, Metze D, Weib N, Luger TA, Bohm M. Hydroxychloroquine modulates metabolic activity and proliferation and induces autophagic cell death of human dermal fibroblasts. *J Invest Dermatol.* 2009;129:2419–26.
 88. Smith B, O'Grady F. Experimental chloroquine myopathy. *J Neurol Neurosurg Psychiatry.* 1966;29:255–8.
 89. Projean D, Baune B, Farinotti R, Flinois JP, Beaune P, Taburet AM, Ducharme J. In vitro metabolism of chloroquine: Identification of CYP2C8, CYP3A4, and CYP2D6 as the main isoforms catalyzing *N*-desethylchloroquine formation. *Am Soc Pharmacol Exp Ther.* 2003;31:748–54.
 90. Whitehouse MW, Bostrom H. Biochemical properties of anti-inflammatory drugs-VI. The effects of chloroquine (Resochin) and some of their potential metabolites on cartilage metabolism and oxidative phosphorylation. *Biochem Pharmacol.* 1965;14:1173–84.
 91. Kuroda K. Detection and distribution of chloroquine metabolites in human tissues. *J Pharmacol Exp Ther.* 1962;137:156–61.
 92. Estes ML, Ewing-Wilson D, Chou SM, Mitsumoto H, Hanson M, Shirey E, Ratliff NM. Chloroquine neuromyotoxicity. Clinical and pathological perspective. *Am J Med.* 1987;82:447–55.
 93. Kim KA, Park JY, Lee SJ, Lim S. Cytochrome P450 2C8 and CYP3A4/5 are involved in chloroquine metabolism in human liver microsomes. *Arch Pharm Res.* 2003;26:631–7.
 94. Ben-Chetrit E, Tischel R, Hinz B, Levy M. The effects of colchicine and hydroxychloroquine on the cyclo-oxygenases COX-1 and COX-2. *Rheumatol Int.* 2005;25:332–5.
 95. Ette E, Brown-Awala EA, Essien EE. Chloroquine elimination in humans: effect of low-dose cimetidine. *J Clin Pharmacol.* 1987;27:813–6.
 96. Bernstein HN. Ocular safety of hydroxychloroquine. *Ann Ophthalmol.* 1991;23:292–6.
 97. Runge LA. Risk/benefit analysis of hydroxychloroquine sulfate treatment in rheumatoid arthritis. *Am J Med.* 1983;75:52–6.
 98. Terrell III WL, Haik KG, Haik Jr GM. Hydroxychloroquine sulfate and retinopathy. *South Med J.* 1988;81:1327–8.

99. Dwosh IL, Stein HB, Urowitz MB, Smythe HA, Hunter T, Ogryzlo MA. Azathioprine in early rheumatoid arthritis. Comparison with gold and chloroquine. *Arthritis Rheum.* 1977;20:685–92.
100. Mackenzie AH. An appraisal of chloroquine. *Arthritis Rheum.* 1970;13:280–91.
101. Tobin DR, Krohel G, Rynes RI. Hydroxychloroquine-seven-year experience. *Arch Ophthalmol.* 1982;100:81–3.
102. Henkind P, Rothfield NF. Ocular abnormalities in patients treated with synthetic antimalarial drugs. *New Engl J Med.* 1963;269:434–9.
103. Molad Y, Gorshtein A, Wysesbeek AJ, Guedj D, Weinberger A, Amit-Vazina M. Protective effect of hydroxychloroquine in systemic lupus erythematosus. Prospective long-term study of an Israeli cohort. *Lupus.* 2002;11:356–61.
104. Akhavan PS, Su J, Lou W, Gladman DD, Urowitz MB, Fortin PR. The early protective effect of hydroxychloroquine on the risk of cumulative damage in patients with systemic lupus erythematosus. *J Rheumatol.* 2013;40:831–41.
105. Scull E. Chloroquine and hydroxychloroquine therapy in rheumatoid arthritis. *Arthritis Rheum.* 1962;5:30–6.
106. Bagnall AW. The value of chloroquine in rheumatoid disease. A four year study of continuous therapy. *Can Med Assoc J.* 1957;77:182–94.
107. Adams EM, Yocum DE, Bell CL. Hydroxychloroquine in the treatment of rheumatoid arthritis. *Am J Med.* 1983;75:321–6.
108. Haydu GG. Rheumatoid arthritis therapy: a rationale and the use of chloroquine diphosphate. *Am J Med Sci.* 1953;225:71–5.
109. The Canadian Hydroxychloroquine Study Group, Tsakonas E, Joseph L, Esdaile JM, Choquette D, et al. A long-term study of hydroxychloroquine withdrawal on exacerbations in systemic lupus erythematosus. *Lupus.* 1998;7:80–5.
110. Clark P, Cases E, Tugwell R, Medina C, Gheno C, Tenorio G, Orozco JA. Hydroxychloroquine compared with placebo in rheumatoid arthritis. *Ann Intern Med.* 1993;119:1067–71.
111. Maksymowych W, Russell AS. Antimalarials in rheumatology: efficacy and safety. *Semin Arthritis Rheum.* 1987;16:206–21.
112. Freedman A. Chloroquine and rheumatoid arthritis. A short-term controlled trial. *Ann Rheum Dis.* 1956;15:251–7.
113. Rynes RI. Ophthalmologic safety of long-term hydroxychloroquine sulfate treatment. *Am J Med.* 1983;75:35–9.
114. Browning DJ. Hydroxychloroquine and chloroquine retinopathy: screening for drug toxicity. *Am J Ophthalmol.* 2002;133:649–56.
115. Wang C, Fortin PR, Li Y, Panaritis T, Gans M, Esdaile JM. Discontinuation of antimalarial drugs in systemic lupus erythematosus. *J Rheumatol.* 1999;26:808–15.
116. Paulus HE. An overview of benefit/risk of disease modifying treatment of rheumatoid arthritis as of today. *Ann Rheum Dis.* 1982;41:26–9.
117. Alarcon GS, McGwin G, Bertoli AM, Fessler BJ, Calvo-Alen J, Bastian HM, Vila LM, Reveille JD. Effect of hydroxychloroquine on the survival of patients with systemic lupus erythematosus: data from LUMINA, multiethnic US cohort (LUMINA L). *Ann Rheum Dis.* 2007;66:1168–72.
118. Fox R. Anti-malarial drugs: possible mechanisms of action in autoimmune disease and prospects for drug development. *Lupus.* 1996;5:S4–10.
119. Abarientos C, Sperber K, Shapiro DL, Aronow WS, Chao CP, Ash JY. Hydroxychloroquine in systemic lupus erythematosus and rheumatoid arthritis and its safety in pregnancy. *Expert Opin Drug Saf.* 2011;10:705–14.
120. American College of Rheumatology Ad Hoc Committee on Clinical Guidelines. Guidelines for the management of rheumatoid arthritis. *Arthritis Rheum.* 1996;39:713–22.
121. Furst DE, Lindsley H, Baethge B, Botstein GR, Caldwell J, Dietz F, Etlinger R, Golden HE, McLaughlin GE, Moreland LW, et al. Dose-loading with hydroxychloroquine improves the rate of response in early, active rheumatoid arthritis. *Arthritis Rheum.* 1999;42:357–65.
122. Kaufmann AM, Krise JP. Lysosomal sequestration of amine-containing drugs: analysis and therapeutic implications. *J Pharm Sci.* 2007;96:729–46.
123. Elman A, Gullberg R, Nillson E, Rendahl I, Wachtmeister L. Chloroquine retinopathy in patients with rheumatoid arthritis. *Scand J Rheumatol.* 1976;5:161–6.
124. Percival SPB, Behrman J. Ophthalmological safety of chloroquine. *Br J Ophthalmol.* 1969;53:101–9.
125. Grierson DJ. Hydroxychloroquine and visual screening in a rheumatology outpatient clinic. *Ann Rheum Dis.* 1997;56:188–90.
126. Browning DJ. Impact of the revised American Academy of Ophthalmology guidelines regarding hydroxychloroquine screening on actual practice. *Am J Ophthalmol.* 2013;155:418–28.
127. Browning DJ. Reply to impact of the revised American Academy of Ophthalmology guidelines regarding hydroxychloroquine screening on actual practice. *Am J Ophthalmol.* 2013;156:410–1.
128. Morand EF, McCloud PI, Littlejohn GO. Continuation of long term treatment with hydroxychloroquine in systemic lupus erythematosus and rheumatoid arthritis. *Ann Rheum Dis.* 1992;51:1318–21.
129. Petri M. Hydroxychloroquine use in the Baltimore Lupus Cohort: effects on lipids, glucose and thrombosis. *Lupus.* 1996;5:S16–22.
130. Bruce-Chwatt LJ. Chloroquine blindness? *Lancet.* 1968;2:1039.
131. Reed H, Campbell AA. Central scotomata following chloroquine therapy. *Can Med Assoc J.* 1962;86:176–8.

132. Easterbrook M. Clinical characteristics of hydroxychloroquine retinopathy. *Evid Based ophthalmol.* 2011;12:132–3.
133. Mavrikakis I, Sfrikakis PP, Mavrikakis E, Rougas K, Nikolaou A, Kostopoulos C, Mavrikakis M. The incidence of irreversible retinal toxicity in patients treated with hydroxychloroquine—a reappraisal. *Ophthalmology.* 2003;110:1321–6.
134. Arden GB, Kolb H. Antimalarial therapy and early retinal changes in patients with rheumatoid arthritis. *Br Med J.* 1966;1:270–3.
135. Finbloom DS, Silver K, Newsome DA, Gunkel R. Comparison of hydroxychloroquine and chloroquine use and the development of retinal toxicity. *J Rheumatol.* 1985;12:692–4.
136. Savarino A, Trani LD, Donatelli I, Cauda R, Cassone A. New insights into the antiviral effects of chloroquine. *Reflection React.* 2006;6:67–8.
137. Carr RE, Henkind P, Rothfield N, Siegel IM. Ocular toxicity of antimalarial drugs—long-term follow-up. *Am J Ophthalmol.* 1968;66:738–44.
138. Percival SPB, Meanock I. Chloroquine: ophthalmological safety and clinical assessment in rheumatoid arthritis. *Br Med J.* 1968;3:579–84.
139. Miller DR, Fiechtner JJ, Carpenter JR, Brown RR, Strohshane RM, Stecher VJ. Plasma hydroxychloroquine concentrations and efficacy in rheumatoid arthritis. *Arthritis Rheum.* 1987;30:567–71.
140. Kench JG, Seale JP, Temple DM, Tennant C. The effects of non-steroidal inhibitors of phospholipase A2 on leukotriene and histamine release from human and guinea-pig lung. *Prostaglandins.* 1985;30:199–208.
141. Frisk-Holmberg M, Bergqvist Y. Chloroquine disposition in man. *Br J Clin Pharmacol.* 1982;14:624P–6.
142. Salmeron G, Lipsky PE. Immunosuppressive potential of antimalarials. *Am J Med.* 1983;75:19–24.
143. Tett SE, Day RO, Cutler DJ. Concentration-effect relationship of hydroxychloroquine in rheumatoid arthritis—a cross sectional study. *J Rheumatol.* 1993;20:1874–9.
144. Wollheim FA, Hanson A, Laurell CB. Chloroquine treatment in rheumatoid arthritis. *Scand J Rheumatol.* 1978;7:171–6.
145. Costedoat-Chalumeau N, Amoura Z, Hulot JS, Hummoud HA, Aymard G, Cacoub P, Frances C, Wechsler B, et al. Low blood concentration of hydroxychloroquine is a marker for and predictor of disease exacerbations in patients with systemic lupus erythematosus. *Arthritis Rheum.* 2006;65:3284–90.
146. Ullberg S, Lindquist NG, Sjostrand SE. Accumulation of chorio-retinotoxic drugs in the foetal eye. *Nature.* 1970;227:1257–8.
147. Cimaz R, Brucato A, Merigalli E, Muscara M, Sergi P. Electroretinograms of children born to mothers treated with hydroxychloroquine during pregnancy and breast-feeding: comment on the article by Costedoat-Chalumeau et al. *Arthritis Rheum.* 2004;50:3056–7.
148. Costedoat-Chalumeau N, Amoura Z, Aymard G, Hong DLT, Wechsler B, et al. Evidence of transplacental passage of hydroxychloroquine in humans. *Arthritis Rheum.* 2002;46:1123–4.
149. Klinger G, Morad Y, Westall CA, Laskin C, Spitzer KA, Koren G, Buncic RJ. Ocular toxicity and antenatal exposure to chloroquine or hydroxychloroquine for rheumatic diseases. *Lancet.* 2001;358:813–4.
150. Motta M, Tincani A, Faden D, Zinzini E, Chirico G. Antimalarial agents in pregnancy. *Lancet.* 2002;359:524–5.
151. Parke A, West B. Hydroxychloroquine in pregnant patients with systemic lupus erythematosus. *J Clin Rheumatol.* 1996;23:1715–8.
152. Clowse MEB, Magder L, Witter F, Petri M. Hydroxychloroquine in lupus pregnancy. *Arthritis Rheum.* 2006;54:3640–7.
153. Khamashta MA, Buchanan NMM, Hughes GRV. The use of hydroxychloroquine in lupus pregnancy: the British experience. *Lupus.* 1996;5:S65–6.
154. Costedoat-Chalumeau N, Amoura Z, Duhaut P, Huang DLT, Sebbough D, Wechsler B, et al. Safety of hydroxychloroquine in pregnant patients with connective tissue disease: a study of one hundred thirty-three cases compared with a control group. *Arthritis Rheum.* 2003;48:3207–11.
155. Borden MB, Parke AL. Antimalarial drugs in systemic lupus erythematosus: use in pregnancy. *Drug Saf.* 2001;24:1055–83.
156. Parke A. Antimalarial drugs and pregnancy. *Am J Med.* 1988;85:30–3.
157. Hart CW, Naunton RF. The ototoxicity of chloroquine phosphate. *Arch Otolaryngol.* 1964;80:407–12.
158. Costedoat-Chalumeau N, Amoura Z, Sebbough D, Piette JC. Reply. *Arthritis Rheum.* 2004;50:3057–8.
159. Ostensen M, Brown ND, Chiang PK, Aarbakke J. Hydroxychloroquine in human breast milk. *Eur J Clin Pharmacol.* 1985;28:357.
160. Yam JCS, Kwok AKH. Ocular toxicity of hydroxychloroquine. *Hong Kong Med J.* 2006;12:294–304.
161. Yoon YH, Cho KS, Hwang JJ, et al. Induction of lysosomal dilatation, arrested autophagy, and cell death by chloroquine in cultured ARPE-19 cells. *Invest Ophthalmol Vis Sci.* 2010;51:6030–7.
162. de Duve C, de Barsey T, Poole B, Trouet A, Tulkens P, Van Hoof F. Lysosomotropic agents. *Biochem Pharmacol.* 1974;23:2495–531.
163. Ohkuma S, Poole B. Fluorescence probe measurement of the intralysosomal pH in living cells and the perturbation of pH by various agents. *Proc Natl Acad Sci U S A.* 1978;75:3327–33.
164. Ginsburg H, Geary TG. Current concepts and new ideas on the mechanism of action of quinoline-containing antimalarials. *Biochem Pharmacol.* 1987;36:1567–76.

165. Kyburz D, Brentano F, Gay S. Mode of action of hydroxychloroquine in RA—evidence of an inhibitory effect on toll-like receptor signaling. *Nat Clin Pract Rheumatol*. 2006;2:458–9.
166. Stauber WT, Hedge AM, Trout JJ, Schottelius BA. Inhibition of lysosomal function in red and white skeletal muscles by chloroquine. *Exp Neurol*. 1981;71:295–306.
167. Lafyatis R, York M, Marshak-Rothstein A. Antimalarial agents: closing the gate on toll-like receptors? *Arthritis Rheum*. 2006;54:3068–70.
168. Gonzalez-Noriega A, Grubb JH, Talkad V, Sly WS. Chloroquine inhibits lysosomal enzyme pinocytosis and enhances lysosomal enzyme secretion by impairing receptor recycling. *J Cell Biol*. 1980;85:839–52.
169. Jones CJP, Salisbury RS, Jayson MIV. The presence of abnormal lysosomes in lymphocytes and neutrophils during chloroquine therapy: a quantitative ultrastructural study. *Ann Rheum Dis*. 1984;43:710–5.
170. Prowse C, Pepper D, Dawes J. Prevention of the platelet alpha-granule release reaction by membrane-active drugs. *Thromb Res*. 1982;25:219–27.
171. Cruz da Silva J, Mariz HA, da Rocha Jr LF, de Oliveira PSS, Dantas AT, Duarte ALBP, Pitta IDR, Galdino SL, Pitta MGDR. Hydroxychloroquine decreases TH17-related cytokines in systemic lupus erythematosus and rheumatoid arthritis patients. *Clinics*. 2013;68:766–71.
172. Antoine JC, Gould B, Jovanne C, Maurice M, Feldman G. Ammonium chloride, methylamine and chloroquine reversibly inhibit antibody secretion by plasma cells. *Biol Cell*. 1985;55:41–54.
173. Macfarlane DE, Manzel L. Antagonism of immunostimulatory CpG-oligodeoxynucleotides by quina-crine, chloroquine, and structurally related compounds. *J Immunol*. 1998;160:1122–31.
174. McConnell DG, Wachtel J, Havener WH. Observations on experimental chloroquine retinopathy. *Arch Ophthalmol*. 1964;71:552–3.
175. Namazi MR. The potential negative impact of proton pump inhibitors on the immunopharmacologic effects of chloroquine and hydroxychloroquine. *Lupus*. 2009;18:104–5.
176. Bondeson J, Sundler R. Antimalarial drugs inhibit phospholipase A2 activation and induction of interleukin 1 beta and tumor necrosis factor alpha in macrophages: implications for their mode of action in rheumatoid arthritis. *Gen Pharmacol*. 1998;30:357–66.
177. Alvan G. Determination of chloroquine and its desethyl metabolite in plasma, red blood cells and urine by liquid chromatography. *J Chromatogr*. 1982;229:241–7.
178. Sanders VM, Uhr JW, Vitetta ES. Antigen-specific memory and virgin B cells differ in their requirements for conjugation to T cells. *Cell Immunol*. 1987;104:419–25.
179. Macomber PB, Sprinz H. Morphological effects of chloroquine on *Plasmodium berghei* in mice. *Nature*. 1967;214:937–9.
180. Martin RE, Marchetti RV, Cowen AI, Howitt SM, Broer SV, Kirk K. Chloroquine transport via the malaria parasite's chloroquine resistance transporter. *Science*. 2009;325:1680–2.
181. Karres I, Kremer JP, Dietl I, Steckholzer U, Jochum M, Ertel W. Chloroquine inhibits proinflammatory cytokine release into human whole blood. *Am J Physiol*. 1998;274:R1058–64.
182. Jang CH, Choi JH, Byun MS, Jue DM. Chloroquine inhibits production of TNF-alpha, IL-1 beta, and IL-6 from lipopolysaccharide-stimulated human monocytes/macrophages by different modes. *Rheumatology*. 2006;45:703–10.
183. Weber SM, Levitz SM. Chloroquine interferes with lipopolysaccharide-induced TNF- α gene expression by a nonlysosomotropic mechanism. *J Immunol*. 2000;165:1534–40.
184. Manku MS, Horrobin DF. Chloroquine, quinine, procaine, quinidine, tricyclic antidepressants, and methylxanthines as prostaglandin agonists and antagonists. *Lancet*. 1976;20:1115–7.
185. Löffler BM, Bohn E, Hesse B, Kunze H. Effects of antimalarial drugs on phospholipase A and lysophospholipase activities in plasma membrane, mitochondrial, microsomal and cytosolic subcellular fractions of rat liver. *Biochim Biophys Acta*. 1985;835:448–55.
186. Matsuzawa Y, Hostetler KY. Effects of chloroquine and 4,4'-bis (diethylaminoethoxy)á, á-diethyldiphenylethane on the incorporation of [3H]glycerol into the phospholipids of rat liver lysosomes and other subcellular fractions, in vivo. *Biochim Biophys Acta*. 1980;620:592–602.
187. Trout JJ, Stauber WT, Schottelius BA. Increased autophagy in chloroquine treated tonic and phasic muscles: an alternative view. *Tissue Cell*. 1982;13:393–401.
188. Fiddick R, Heath H. Inhibition of alcohol dehydrogenase by chloroquine. *Nature*. 1967;213:628–9.
189. Roskoski Jr R, Jaskunas SR. Chloroquine and primaquine inhibition of rat liver cell-free polynucleotide-dependent polypeptide synthesis. *Biochem Pharmacol*. 1972;21:391–9.
190. Lefler CF, Lilja HS, Holbrook Jr DJ. Inhibition of aminoacylation and polypeptide synthesis by chloroquine and primaquine in rat liver in vitro. *Biochem Pharmacol*. 1973;22:715–28.
191. Ward PA. The chemosuppression of chemotaxis. *J Exp Med*. 1966;124:209–26.
192. Labro MT, Babin-Chevaye C. Effects of amodiaquine, chloroquine, and mefloquine on human polymorphonuclear neutrophil function in vitro. *Antimicrob Agents Chemother*. 1988;32:1124–30.
193. Weissmann G. Lysosomes (concluded). *New Engl J Med*. 1965;273:1143–9.
194. Brentano F, Schorr O, Gay RE, Gay S, Kyburz D. RNA released from necrotic synovial fluid cells activates rheumatoid arthritis synovial fibroblasts via Toll-like receptor 3. *Arthritis Rheum*. 2005;52:2656–65.

195. Leadbetter EA, Rifkin IR, Hohlbaum AM, Beaudette BC, Schlomchik MJ, Marshak-Rothstein A. Chromatin-IgG complexes activate B cells by dual engagement of IgM and Toll-like receptors. *Nature*. 2002;416:603–7.
196. Tehrani R, Ostrowski RA, Hariman R, Jay WM. Ocular toxicity of hydroxychloroquine. *Semin Ophthalmol*. 2008;23:201–9.
197. Wada A, Sakurai S, Kobayashi H, Yanagihara N, Izumi F. Suppression by phospholipase A2 inhibitors of secretion of catecholamines from isolated adrenal medullary cells by suppression of cellular calcium uptake. *Biochem Pharmacol*. 1983;32:1175–8.
198. Wiesmann EN, DiDonato S, Herschkowitz NN. Effect of chloroquine on cultured fibroblasts: release of lysosomal hydrolases and inhibition of their uptake. *Biochem Biophys Res Commun*. 1975;66:1338–43.
199. Roman MJ, Shanker BA, Davis A, Lockshin MD, Sammaritano L, Simantov R, Crow MK, et al. Prevalence and correlates of accelerated atherosclerosis in systemic lupus erythematosus. *N Engl J Med*. 2003;349:2299–406.
200. Wallace DJ, Metzger AL, Stecher VJ, Turnbull BA, Kern PA. Cholesterol-lowering effect of hydroxychloroquine in patients with rheumatic disease: reversal of deleterious effects of steroids on lipids. *Am J Med*. 1990;89:322–6.
201. Wasko MCM, Hubert HB, Lingala VB, Elliott JR, LuggenME, FriesJF, WardMM. Hydroxychloroquine and risk of diabetes in patients with rheumatoid arthritis. *JAMA*. 2007;298:187–93.
202. Kitridou R, Rees RG, Smith MJ, Peiris A, Kissebah AH. Effect of chloroquine on insulin and glucose homeostasis in normal subjects and patients with non-insulin dependent diabetes mellitus. *Br Med J*. 1987;294:900–1.
203. Ruiz-Irastorza G, Egurbide MV, Pijoan JI, Garmendia M, Villar I, Martinez-Berriotxo A, Erdozain JG, Aguirre C. Effects of antimalarials on thrombosis and survival in patients with systemic lupus erythematosus. *Lupus*. 2006;15:577–83.
204. Hurvitz D, Hirschhorn K. Suppression of in vitro lymphocyte responses by chloroquine. *N Engl J Med*. 1965;273:23–6.
205. Ohkuma S, Chudzik J, Poole B. The effects of basic substances and acidic ionophores on the digestion of exogenous and endogenous proteins in mouse peritoneal macrophages. *J Cell Biol*. 1986;102:959–66.
206. Oda K, Koriyama Y, Yamada E, Ikehara Y. Effects of weakly basic amines on proteolytic processing and terminal glycosylation of secretory proteins in cultured rat hepatocytes. *J Biol Chem*. 1986;240:739–45.
207. Wright CI, Sabine JC. Cholinesterases of human erythrocytes and plasma and their inhibition by antimalarial drugs. *J Pharmacol Exp Ther*. 1948;93:230–9.
208. Jeong JY, Choi JW, Jeon KI, Jue DM. Chloroquine decreases cell-surface expression of tumour necrosis factor receptors in human histiocytic U-937 cells. *Immunology*. 2002;105:83–91.
209. Meng XW, Feller JM, Ziegler JB, Pittman SM, Ireland CM. Induction of apoptosis in peripheral blood lymphocytes following treatment in vitro with hydroxychloroquine. *Arthritis Rheum*. 1997;40:927–35.
210. Kim WU, Yoo SA, Min SY, Park SH, Koh HS, Song SW, Cho CS. Hydroxychloroquine potentiates Fas-mediated apoptosis of rheumatoid synoviocytes. *Clin Exp Immunol*. 2006;144:503–11.
211. Weber SM, Chen JM, Levitz SM. Inhibition of mitogen-activated protein kinase signaling by chloroquine. *J Immunol*. 2002;168:5303–9.
212. Ghigo D, Aldieri E, Todde R, Costamagna C, Garbarino G, Pescarmona G, Bosia A. Chloroquine stimulates nitric oxide synthesis in murine, porcine, and human endothelial cells. *J Clin Invest*. 1998;102:595–605.
213. Tietze C, Schlesinger P, Stahl P. Chloroquine and ammonium ion inhibit receptor-mediated endocytosis of mannose-glycoconjugates by macrophages: apparent inhibition of receptor recycling. *Biochem Biophys Res Commun*. 1980;93:1–8.
214. Allison JL, O'Brien RL, Hahn FE. DNA: reaction with chloroquine. *Science*. 1965;149:1111–3.
215. Ciak J, Hahn FE. Chloroquine: mode of action. *Science*. 1966;151:347–9.
216. O'Brien RL, Olenick JG, Hahn FE. Reactions of quinine, chloroquine, and quinacrine with DNA and their effects on the DNA and RNA polymerase reactions. *Proc Natl Acad Sci USA*. 1966;55:1511–7.
217. Yucel-Lindberg T, Jansson H, Glaumann H. Proteolysis in isolated autophagic vacuoles from the rat pancreas. Effects of chloroquine administration. *Virchows Arch B Cell Pathol*. 1991;61:141–5.
218. Raines MF, Bhargava SK, Rosen ES. The blood-retinal barrier in chloroquine retinopathy. *Invest Ophthalmol Vis Sci*. 1989;30:1726–31.
219. Weisinger HS, Pesudovs K, Collin HB. Management of patients undergoing hydroxychloroquine (Plaquenil) therapy. *Clin Exp Optom*. 2000;83:32–6.
220. Goldstein JL, Brunschede GY, Brown MS. Inhibition of the proteolytic degradation of low density lipoprotein in human fibroblasts by chloroquine, concanavalin A, and Triton WR 1339. *J Biol Chem*. 1975;250:7854–62.
221. Ausiello CM, Barbieri P, Spagnoli GC, Ciompi ML, Gasciani CU. In vivo effects of chloroquine treatment on spontaneous and interferon-induced natural killer activities in rheumatoid arthritis patients. *Clin Exp Rheumatol*. 1986;4:255–9.
222. O'Brien RL, Allison JL, Hahn FE. Evidence for intercalation of chloroquine into DNA. *Biochim Biophys Acta*. 1966;129:622–4.

223. Wozniacka A, Lesiak A, Boncela J, Smolarczyk K, McCauliffe DP, Sysa-Jedrzejowska A. The influence of antimalarial treatment on IL-1beta, IL-6 and TNF-alpha mRNA expression on UVB-irradiated skin in systemic lupus erythematosus. *Br J Dermatol.* 2008;159:1124–30.
224. Ahmed MH, Ashton N, Balment RJ. The effect of chloroquine on renal function and vasopressin secretion: a nitric oxide-dependent effect. *J Pharmacol Exp Ther.* 2003;304:156–61.
225. Accapezzato D, Visco V, Francavilla V, Molette C, Donato T, et al. Chloroquine enhances human CD8 T cell responses against soluble antigens in vivo. *J Exp Med.* 2005;202:817–28.



<http://www.springer.com/978-1-4939-0596-6>

Hydroxychloroquine and Chloroquine Retinopathy

Browning, D.J.

2014, XV, 291 p. 113 illus. in color., Hardcover

ISBN: 978-1-4939-0596-6