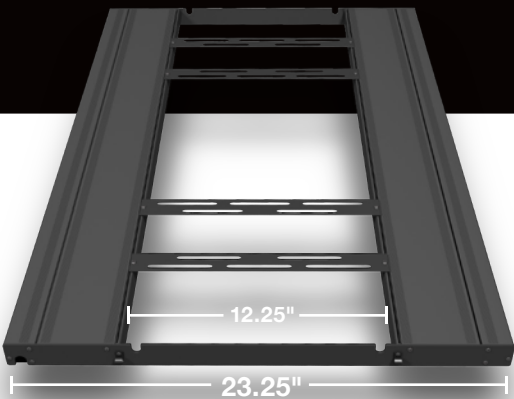
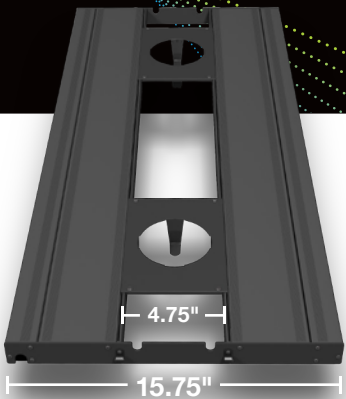
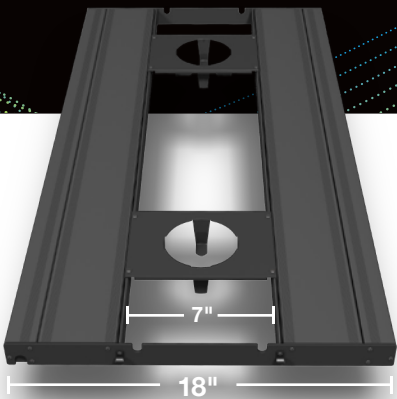




The **T5HO Hybrid Fixtures** are available in **four lengths** and are 18" wide. The width is **ideal for aquariums** that are **18"-24"** front-to-back. The **61" model** is designed for use over a **six foot aquarium**.

Included brackets will accommodate: **Aqua Illumination Hydra 26 & Hydra 52™**, **EcoTech Radion XR15w & XR30w™**, **Kessil A360 & Kessil AP700™** fixtures.

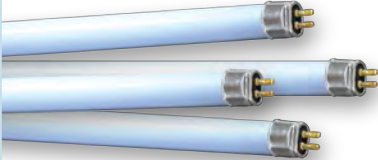


Included Components for T5HO Hybrid Fixtures				
Model	420504 24"	420505 36"	420506 48"	420522 61"
Component Quantity				
T5HO 2-Lamp Fixture Housing	2	2	2	2
18" End Plate (pair) Item# 470535 - Black	1	1	1	1
18" LED Bracket (pair) Item# 470531 - Black	1	2	3	4
16"/18" LED Bracket (4" round opening) Item# 470532 - Black Ideal for mounting the Kessil A360™	1	2	3	4
Suspension Hardware Item# 470281	1	1	1	1
Each fixture requires assembly and includes all screws and cable management clips				

Customize for Narrow Tanks
Optional components allow you to <b>REDUCE</b> the fixture width to 15.75" Ideal for aquariums 16"-18" wide
16" End Plate (pair) Item# 470534 - Black
16" LED Bracket (pair) Item# 470537 - Black Ideal for mounting the AI Prime™
16"/18" LED Bracket (4" round opening) Item# 470532 - Black Ideal for mounting the Kessil A360™
16"/18" LED Bracket (2.5" round opening) Item# 470533 - Black Ideal for mounting the Kessil A160™

Customize for Wide Tanks
Optional components allow you to <b>EXPAND</b> the fixture width to 23.25" Ideal for aquariums 24"-36" wide
24" End Plate (pair) Item# 470536 - Black
24" LED Bracket (pair) Item# 470538 - Black Ideal for mounting the EcoTech Radion XR30w™ or the AI Hydra 52™ perpendicular to the T5HO fixtures

You add the <b>four T5HO lamps</b> of your choice	24" Model - 24" lamps, 24W	48" Model - 48" lamps, 54W
	36" Model - 36" lamps, 39W	61" Model - 60" lamps, 80W



Helpful Hints	Round LED brackets can be used for 16" or 18" wide setup by rotating bracket 90°	Place LED fixtures at the ends of the 61" fixture to allow light to reach the ends of a six foot aquarium	Universal HEP ballasts work with 100-277 volts/ 50-60 Hz.	Use optional Aquatic Life fixture hangers (Item# 370547) to suspend the Hybrid fixture