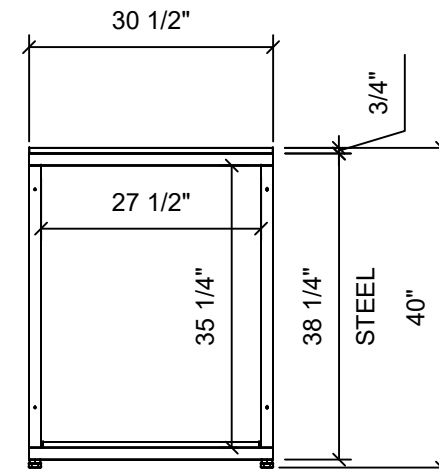
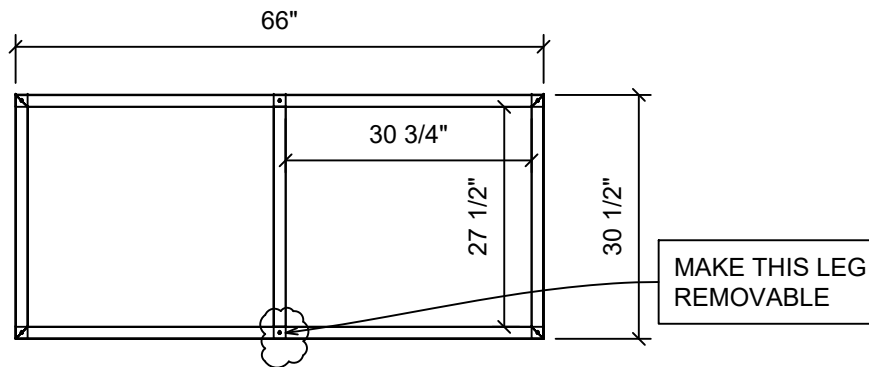


1 METAL STAND - FRONT
1/2" = 1'-0"



2 METAL STAND - SIDE
1/2" = 1'-0"



3 METAL STAND - TOP
1/2" = 1'-0"

DRILL Ø3/16" FASCIA
MOUNTING HOLES
IN FRONT AND SIDE LEGS:
CENTER HOLES 3" FROM TOP,
5" FROM BOTTOM. IF STAND
HEIGHT IS GREATER THAN
36", ADD ADDITIONAL HOLE
HALFWAY BETWEEN TOP AND
BOTTOM HOLES

NOT FOR PRODUCTION USE

ACCEPTED BY: _____ Date: _____



623 107th Street, Arlington, TX 76011
(214) 275-3958 | jerry@planetaquariums.com

BLUE PLANET AQUARIUMS_#11322