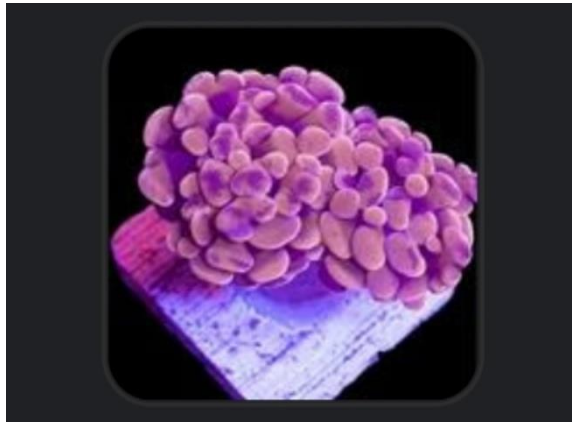


## Rose Gold Hammer

### Image of Received Coral

The left image below shows the coral placed in the tank, after dipping. As you can see, the coral is severely retracted, due to poor packaging and damaged tissue. The right image below is the coral image from the company's website. This is not the image of the exact coral I would expect to receive, but it should look something like it.



### Image of Coral Today (8/7/2021)

The image to the right shows the coral today. I apologize for the extreme blue. The intent of this image is to show the lack of coral extension, coloration, and the visible skeleton around the heads.

The image on the next page shows the coral under white light, which better displays the exposed skeleton around the base of each head, as well as the extreme retraction of the tissue.

These two images do not compare even remotely to the coral's image above.



