

Tank

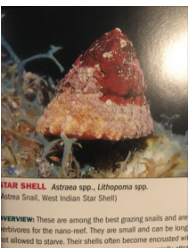
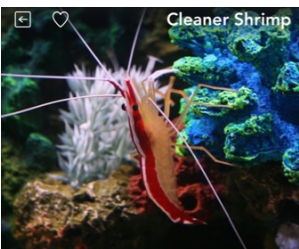
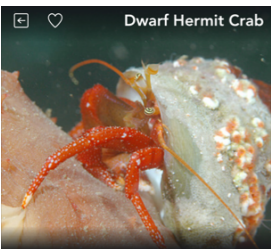


32 gallon LED Biocube



10 gallon sump/refugium

Clean up Crew



x?

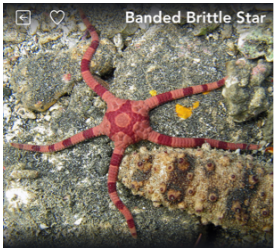
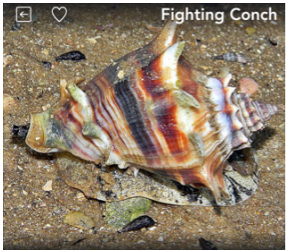
x?

x?



x?

Maybe?

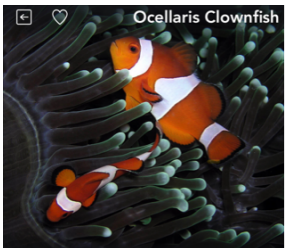


x1

x1

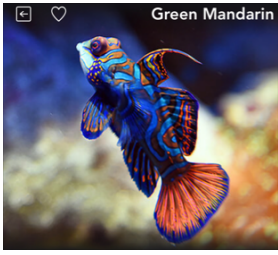
x1

Fish



x2

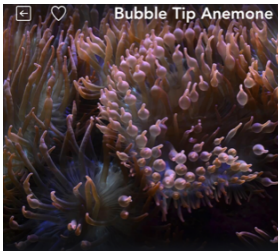
Maybe?



x1

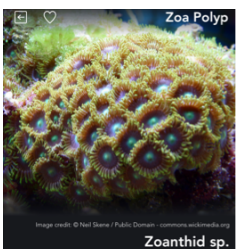
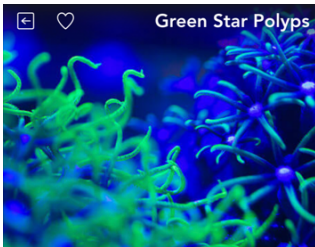
x1

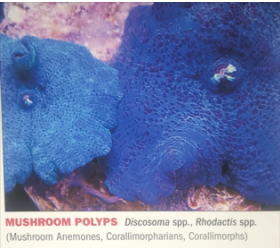
Invertebrates



x1

Corals

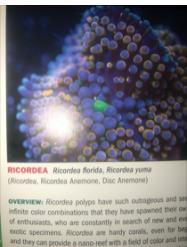




MUSHROOM POLYPS *Discosoma* spp., *Rhodactis* spp.
(Mushroom Anemones, Corallimorpharians, Corallimorphs)



Image credit: © Bonafide / CC BY-SA 3.0 - commons.wikimedia.org
Blastomussa wellsi



RICORDEA *Ricordea florida*, *Ricordea yuma*
(Ricordea, Ricordea Anemone, Disc Anemone)

OVERVIEW: Ricordea polyps have such outrageous and an infinite color combinations that they have spawned their own of enthusiasts, who are constantly in search of new and exotic specimens. Ricordea are hardy corals, even for big and they can provide a nano-reef with a field of color and life.