

# WiFi-Update

Concerns GHL-devices with ESP WiFi module, such as Mitras LX 7 and ProfiLux 4

The WiFi module has its own file system and firmware, which is independent from the device. The file system as well as the WiFi firmware can be updated via the web interface.

## Preparation:

- A stable WiFi connection to the device (resp. its WiFi module) is required. We recommend a static IP address.
- In case myGHL is used: Prior the update myGHL should be disabled temporarily to avoid interferences during the update, reboot the device after disabling.

## Update-Process:

### 1 Open the web interface

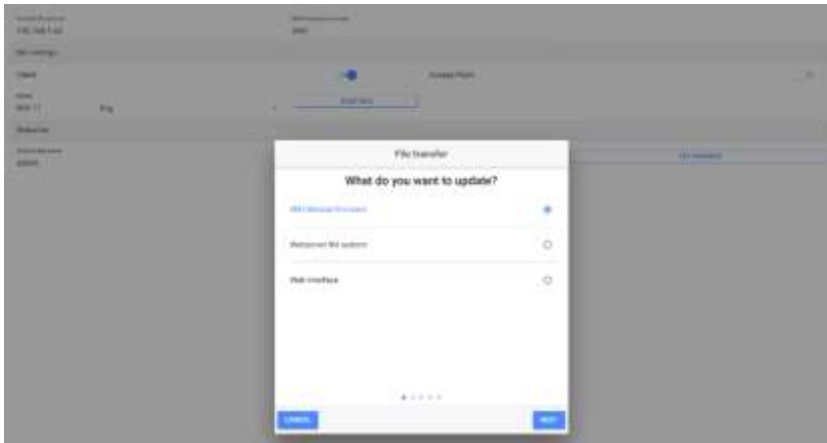
Attention: The browsers Edge and Safari are not recommended for the firmware update; problems with these browsers have been reported. Please use Firefox, Chrome or Internet Explorer.

Enter the IP address of the device in the address line of your browser. Login if you are asked to, the default login is: Username *admin*, PW: *Starfish*.



## 2 Navigate to network

Open the menu (Sandwich-Button), Network->File transfers and follow the instructions of the assistant.



### 2.1 Firmware-Update

If you want to update the firmware, click and choose **firmware.bin**.

### 2.2 Webserver-Update

The Webserver-content will be updated with the file **index.html.gz** after navigating to Network->File transfer.

The built-in step-by-step assistant will guide you through the necessary steps.

- Note: After uploading the new content, refresh the Webbrowser-cache by pressing Ctrl+F5.

You'll find the files in the program directory of WiFi-Update-Tool package in our Download-Center.

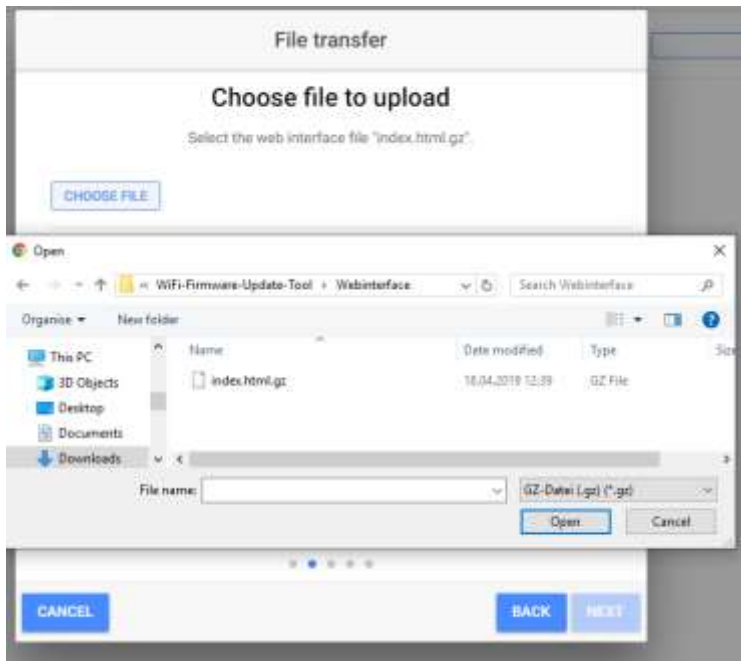
### 2.3 Filesystem (optional)

If the filesystem is not working anymore and must be restored, you can use the file spiffs.bin, which will reset the filesystem to the state at delivery and contains the Webserver-content.

- Warning: Uploading the raw filesystem also deletes your configuration for WiFi-network/Mail-configuration.

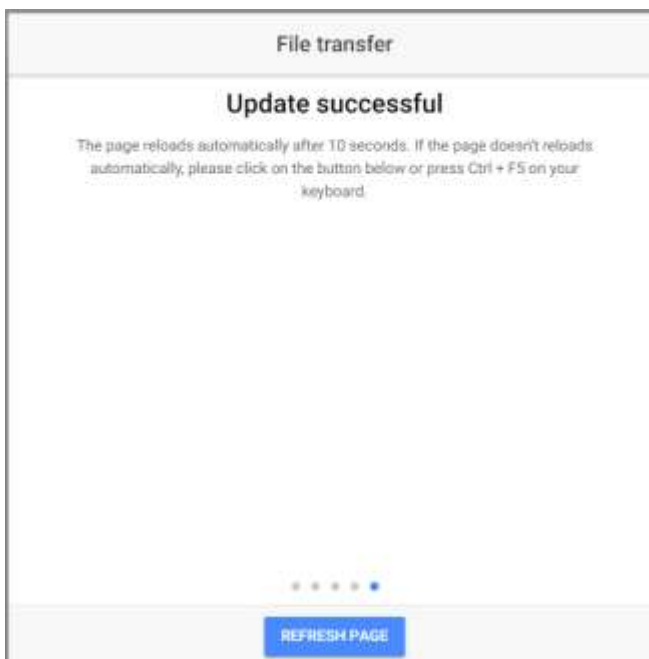
### 3 Start file upload

Confirm following message with OK.



The update is running now – **under no circumstances interrupt it!**

After a while the update is completed. Confirm following message, the WiFi module boots now, wait until the web page is refreshed.



The upload is done now. On the dashboard of the web interface you should see now the actual version number of the firmware resp. the file system.

## 4 Emergency update

**Only necessary if the file system is corrupted! Otherwise do the uploads as described above!**

In case the file system is corrupted (e.g. through a failed upload attempt) the web interface will not be accessible anymore, the above procedure is not possible anymore.

Nevertheless, with following actions an update can be forced:

- enter `http://xxx/update` in the web browser (xxx stands for the IP-address of the device)
- select file `firmware.bin` or `spiffs.bin`
- start upload process with clicking `Update`
- the update is running now – **under no circumstances interrupt it!**
- the module reboots automatically and is after approx. 1 minute operational

